

PIPING AND CONTAINMENT



Franklin Fueling Systems



PRODUCT CATALOG

Piping & Containment

Franklin Fueling Systems piping and containment products make up the industry's most complete line of installation components, both underground and aboveground. These products carry the APT brand name and include piping, fittings, sumps and boots.

Piping	2	Wall Transition Sleeve	25
XP Pressure and Suction Product Piping	2	Sumps	26
XP Marina/Aboveground Product Piping	4	Below Grade Transition Tank Sumps	26
4" Ducting	6	Below Grade Intermediate Piping Sumps	28
Fittings	7	Grade Level Transition Sump	29
XP Clamshell Swivel Pipe Fittings	7	4542 Series One-Piece Tank Sumps	31
XP Clamshell Non-Swivel Pipe Fittings	8	4736 Series One-Piece Tank Sumps	33
XP Male Swage Swivel Pipe Fittings	9	Watertight Fiberglass Turbine Sump Packages	35
XP Clamshell Non-Swivel Tee and Elbow Pipe Fittings	9	Large Mouth Dispenser Sumps	37
End Connections and Fittings	10	Single and Double Wall Fiberglass Large Mouth Dispenser Sumps	44
2" Vent Conversion Box Fittings	12	Classic Dispenser Pan Sumps	46
Termination Boots	13	Sump Accessories	47
Flexible Entry Boots	13	Tank Fitting Adapters	47
Flexible Double Entry Boots	15	Tank Manway Adapters	48
Flexible Bulkhead Boots	17	Stabilizer Bar Kits	48
MD-Series Flexible Entry Boots	19	Accessories	49
Clamshell Secondary Test Boots	21	Installation Tools	49
Swage Secondary Air Test Boots	22	Swage Machine	49
APT Rigid Pipe-Boot Reference Chart	23	Replacement Parts	50
Transition Sleeves	24		
Grade Level Transition Sleeve™	24		

XP Pressure and Suction Product Piping

The 1" size of APT piping can be used in both pressure and suction applications, and is ideal for providing remote feed and fill for heaters, boilers and emergency generators. The 1½", 1¾" and 2" sizes of APT product piping can be used in both pressure and suction applications, and are ideal for underground service station fuel delivery systems. The D-Series piping is a single wall, direct bury piping, while the SC-Series piping provides additional environmental security as a secondary contained direct bury pipe. Both feature controlled flexibility, even in low temperatures, permitting fast, easy installation.



Reel Size	Inches*	cm*
Small standard	86 × 24 × 64½	213.3 × 60.9 × 163.8
Standard (Std.)	86 × 42½ × 63½	218.4 × 107.9 × 161.2
Large standard (Lg. Std.)	86 × 52 × 63½	218.4 × 132.1 × 161.2
Master	91 × 33 × 74	231.1 × 83.8 × 187.9
Super master (S. Mast.)	91 × 52 × 74	231.1 × 132.1 × 187.9

Notes: 1. Do not store piping in direct sunlight.
2. UL971 listed to the January 2004 standards.

*Reel dia. × width × hub dia.

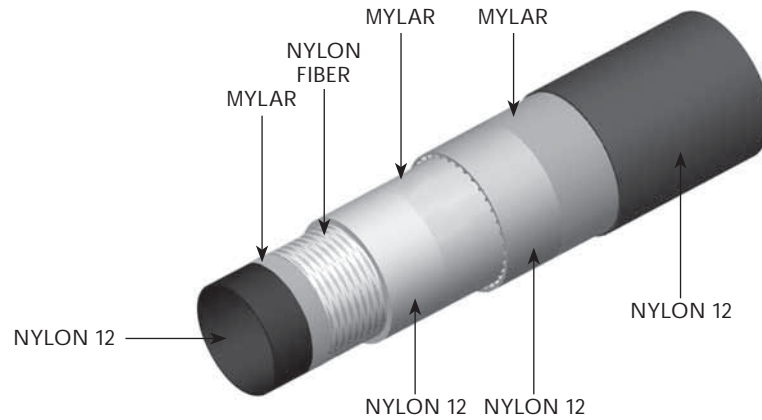
Advantages

- A time proven material, Nylon 12 has been the primary layer of APT pipe for more than 12 years. Preferred by the world's largest auto makers, the fuel line material contains no polyethylene.
- No possibility of piping layer delamination due to the layered piping construction of high-grade material.
- Biofuel approved (E85 and biodiesel).

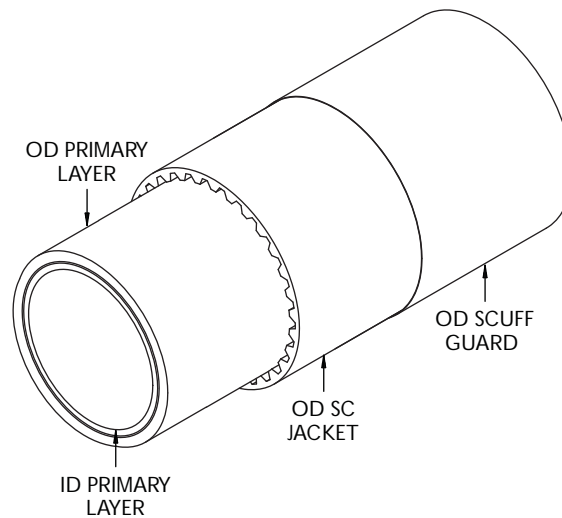


Model	Description	Ft.	Reel	Weight	
				Lbs.	Kg
XP-100-SC	1" secondary contained	250	Small	486	219
		500	Small	593	267
		2,500	Std.	1,478	665
XP-100-D	1" single wall	250	Small	443	199
		500	Small	505	227
XP-150-SC	1½" secondary contained	100	Small	435	196
		250	Small	518	233
		500	Small	655	295
		1,000	Std.	965	434
		1,500	Std.	1,240	558
		2,000	Lg. Std.	1,535	691
XP-150-D	1½" single wall	100	Small.	410	185
		250	Small	455	205
		500	Small	530	239
		1,000	Std.	715	322
		1,500	Std.	865	389
		2,000	Lg. Std.	1,035	466
XP-175-SC	1¾" secondary contained	100	Std.	485	218
		250	Master	655	295
		500	Master	830	374
		1,000	S. Mast.	1,355	610
XP-175-D	1¾" single wall	100	Std.	455	205
		250	Master	580	261
		500	Master	680	306
		1,000	S. Mast.	1,115	502
XP-200-SC	2" secondary contained	100	Master	585	263
		200	Master	690	311
		350	Master	848	381
		700	S. Mast.	1,250	563
XP-200-D	2" single wall	100	Master	545	245
		200	Master	610	275
		350	Master	708	318
		700	S. Mast.	970	437

XP Piping Construction



XP Piping Dimensions



Model	ID ± 0.010 Primary Layer	OD ± 0.020 Primary Layer	OD ± 0.030 SC Jacket	OD ± 0.030 Scuff Guard	Minimum Bend Radius
XP-100-D	1.00"	1.27"	n/a	n/a	36.00"
XP-100-SC	1.00"	1.27"	1.47"	1.502"	36.00"
XP-150-D	1.40"	1.70"	n/a	n/a	36.00"
XP-150-SC	1.40"	1.70"	1.90"	1.925"	36.00"
XP-175-D	1.65"	1.95"	n/a	n/a	36.00"
XP-175-SC	1.65"	1.95"	2.15"	2.175"	36.00"
XP-200-D	2.04"	2.45"	n/a	n/a	36.00"
XP-200-SC	2.04"	2.45"	2.65"	2.675"	36.00"

XP Marina/Aboveground Product Piping

APT metallic ducted (MD) pipe is the ideal choice for aboveground and marina fuel delivery systems. The MD-Series piping system contains our XP product piping inside a flexible metallic conduit. This superior construction adds fire protection, impact resistance and UV stability to what is already the highest quality piping system. The MD-Series pipe is shipped with single wall or secondary contained pipe already installed into the metallic jacket, reducing installation time in the field. For marinas, the flexibility of this product easily handles variation in water levels and can be installed alongside or under docks.



Reel Size	Inches*	cm*
Small standard	86 × 24 × 64½	218.4 × 60.9 × 163.8
Standard	86 × 42½ × 63½	218.4 × 107.9 × 161.2
Master	91 × 33 × 74	231.1 × 83.8 × 187.9
Super master (S. Mast.)	91 × 52 × 74	231.1 × 132.1 × 187.9

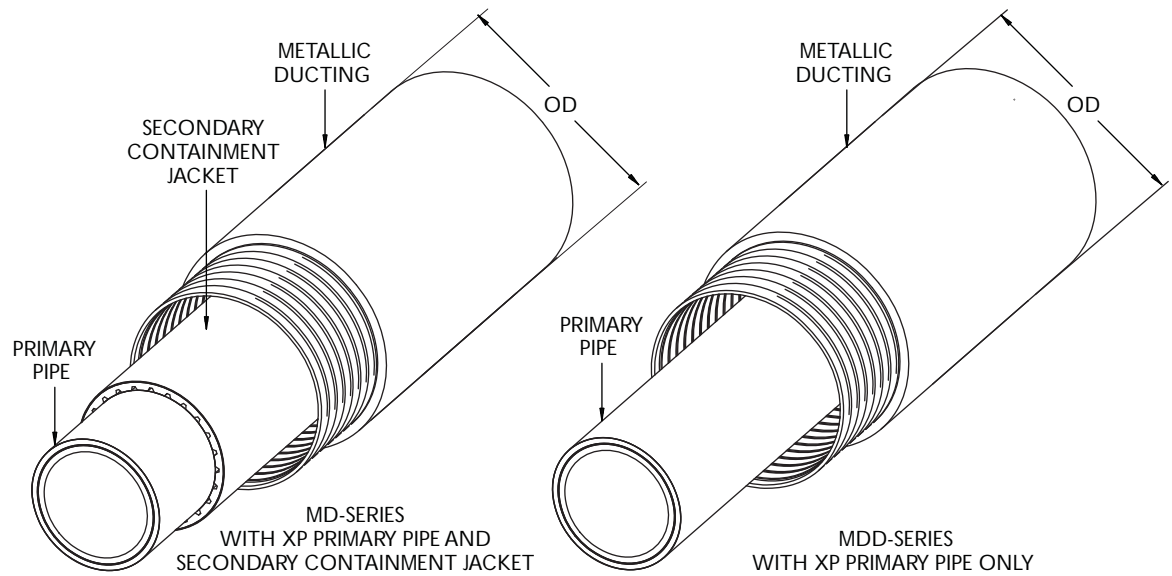
*Reel dia. × width × hub dia.

Model	Description	Ft.	Reel	Weight	
				Lbs.	Kg
XP-100-MD-250	1" secondary contained inside metallic duct	250	Small	813	369
XP-100-MD-500		500	Standard	1,626	738
XP-100-MDD-250	1" single wall inside metallic duct	250	Small	751	340
XP-100-MDD-500		500	Standard	1,501	681
XP-150-MD-250	1½" secondary contained inside metallic duct	250	Small	940	426
XP-150-MD-500		500	Standard	1,879	852
XP-150-MDD-250	1½" single wall inside metallic duct	250	Small	890	404
XP-150-MDD-500		500	Standard	1,779	807
XP-175-MD-250	1¾" secondary contained inside metallic duct	250	Small	1,011	459
XP-175-MD-500		500	Standard	2,022	917
XP-175-MDD-250	1¾" single wall inside metallic duct	250	Small	936	425
XP-175-MDD-500		500	Standard	1,872	849
XP-200-MD-200	2" secondary contained inside metallic duct	200	Master	1,069	485
XP-200-MD-350		350	S. Master	2,083	944
XP-200-MDD-200	2" single wall inside metallic duct	200	Master	999	453
XP-200-MDD-350		350	S. Master	1,871	849

Advantages

- APT's XP marina/aboveground piping consists of XP pipe encased in metallic conduit, making it impact resistant and UV and fire protected.

XP Marina/Aboveground Product Piping



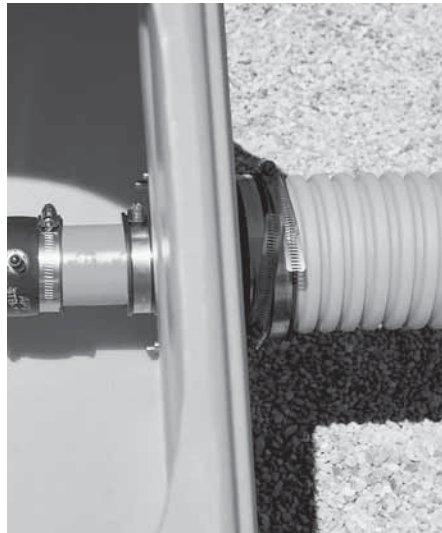
Model	Description	Primary Pipe	Ducting	Ducting OD
XP-100-MD	1" secondary contained inside metallic duct	XP-100-SC	MD-200	2.36"
XP-100-MDD	1" single wall inside metallic duct	XP-100-D	MD-150	1.88"
XP-150-MD	1½" secondary contained inside metallic duct	XP-150-SC	MD-250	2.85"
XP-150-MDD	1½" single wall inside metallic duct	XP-150-D	MD-200	2.36"
XP-175-MD	1¾" secondary contained inside metallic duct	XP-175-SC	MD-250	2.85"
XP-175-MDD	1¾" single wall inside metallic duct	XP-175-D	MD-250	2.85"
XP-200-MD	2" secondary contained inside metallic duct	XP-200-SC	MD-300	3.50"
XP-200-MDD	2" single wall inside metallic duct	XP-200-D	MD-300	3.50"

4" Ducting

APT ducting system allows for pipe removal without extensive excavation. The 4" inside diameter of the DCT-400 ducting allows APT product piping to easily slide through during installation or removal. Entries into sump walls are made with specially engineered ducted entry boots (DEB) or ducted bulkhead boots (DBB). The DCT-400 is used for retractability only and does not serve as a containment layer.



DCT-400-F

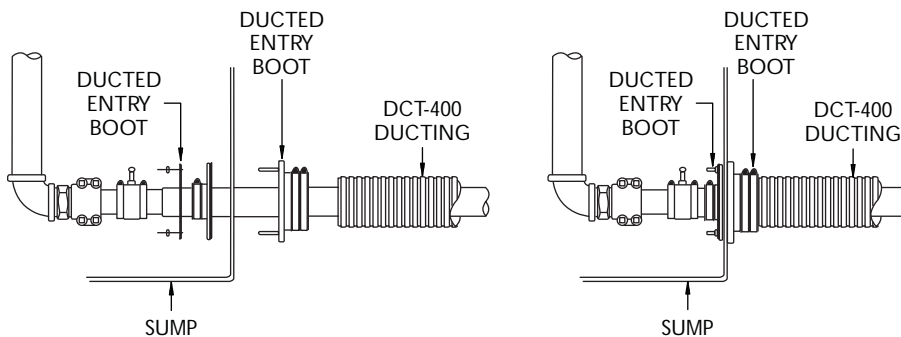


Advantages

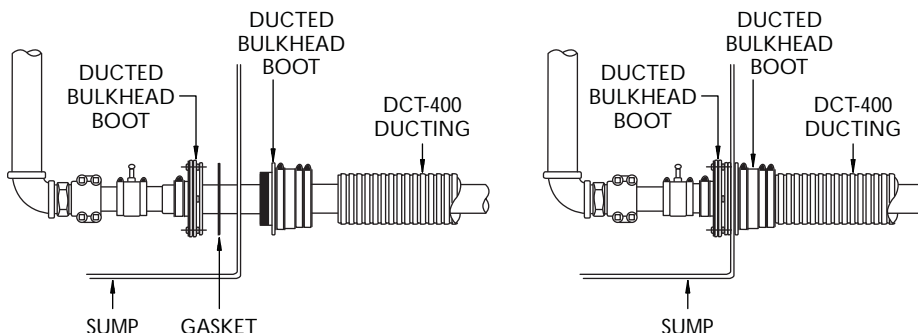
- Ducted entry boots available for product pipe sizes 1" through 2" single or secondary contained piping.
- Ducted entry boots are made from an oil- and gasoline-resistant nitrile rubber and employ stainless steel band clamps for maximum corrosion resistance.
- Entry boots can be serviced from the inside of the sump, eliminating the need for sump excavation.
- Ducting is to be used for retractability only. Secondary containment is achieved by using APT secondary contained (SC) pipe.

Model	Description	Units
DCT-400-100	4" corrugated ducting (for retractability only)	100 LF
DCT-400-250	4" corrugated ducting (for retractability only)	250 LF
DCT-400-F	Flexible ducting connector with clamps	EA

System Using Ducted Entry Boot (DEB-XXX-XX)



System Using Ducted Bulkhead Boot (DBB-XXX-XX)



Advantages

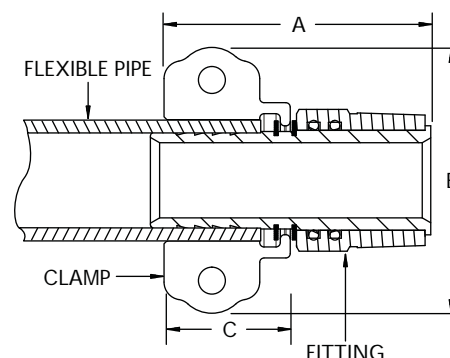
- No special tools required so no project delays when swage machine is inoperative.
- NPT threads are installed quickly and securely, are available locally and are field proven.
- 100 psi rated working pressure.
- Stainless steel fittings biofuel approved (E85 and biodiesel).



XP Clamshell Swivel Pipe Fittings

When using APT product piping, continuous runs eliminate the need for in-line joints. Installers make connections inside accessible containment sumps using APT swivel fittings. These fittings are manufactured from solid brass or stainless steel with two Viton O-rings protected in grooves located on the inside of the connector. Plated clamps secure the fittings to the pipe. XP-Series pipe clamps are labeled XP for easy identification.

Note: Use only XP-Series fittings with XP piping.



Model	A	B	C
MS-XP-150-150	4.00"	4.00"	1.75"
MS-XP-175-200	4.00"	4.00"	1.75"
MS-XP-200-200	4.50"	4.75"	2.25"

Brass Swivels

Model	Description
MS-XP-150-150	Installs on the end of 1½" single/secondary contained XP pipe with 1½" NPT
MS-XP-175-200	Installs on the end of 1¾" single/secondary contained XP pipe with 2" NPT
MS-XP-200-200	Installs on the end of 2" single/secondary contained XP pipe with 2" NPT

Stainless Steel Swivels

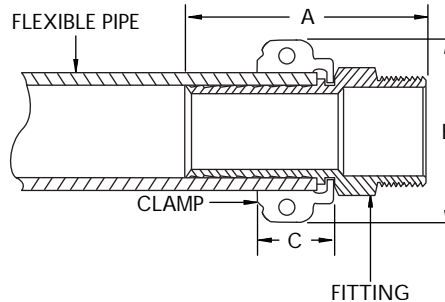
Model	Description
MS-XP-150-150SS*	Installs on the end of 1.50" single/secondary contained XP pipe with 1½" NPT
MS-XP-175-200SS*	Installs on the end of 1.75" single/secondary contained XP pipe with 2" NPT
MS-XP-200-200SS*	Installs on the end of 2.00" single/secondary contained XP pipe with 2" NPT

*Contact Customer Service for availability and lead times.

XP Clamshell Non-Swivel Pipe Fittings

APT non-swivel pipe fittings are constructed of one piece solid brass or stainless steel and provide the same high quality and environmental security as the APT's swivel fittings, at a more economical price. XP-Series clamps are blue and labeled "XP" for easy identification.

Note: Use only XP-Series fittings with XP piping.



Model	A	B	C
MN-XP-100-100SS	3.00"	3.00"	1.50"
MN-XP-150-150	4.00"	3.75"	1.75"
MN-XP-175-200	4.00"	4.00"	1.75"
MN-XP-200-200	4.25"	4.75"	2.25"

Advantages

- APT XP clamshell non-swivel fittings are made from one solid brass piece.
- NPT threads are installed quickly and securely, are available locally and are field proven.
- 100 psi rated working pressure.
- Stainless steel fittings biofuel approved (E85 and biodiesel).



Brass Fittings

Model	Description
MN-XP-100-100	Installs on the end of 1" single/secondary contained XP pipe with 1" NPT
MN-XP-150-150	Installs on the end of 1½" single/secondary contained XP pipe with 1½" NPT
MN-XP-175-200	Installs on the end of 1¾" single/secondary contained XP pipe with 2" NPT
MN-XP-200-200	Installs on the end of 2" single/secondary contained XP pipe with 2" NPT

Stainless Steel Fittings

Model	Description
MN-XP-100-100SS*	Installs on the end of 1" single/secondary contained XP pipe with 1" NPT
MN-XP-150-150SS	Installs on the end of 1 1/2" single/secondary contained XP pipe with 1 1/2" NPT
MN-XP-175-200SS	Installs on the end of 1 3/4" single/secondary contained XP pipe with 2" NPT
MN-XP-200-200SS	Installs on the end of 2" single/secondary contained XP pipe with 2" NPT

*Contact Customer Service for availability and lead times.

Advantages

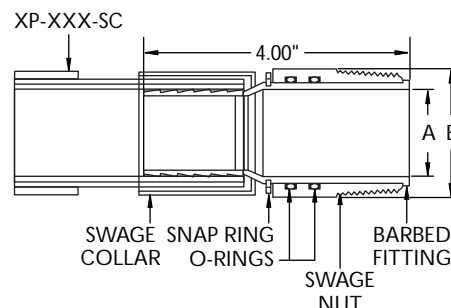
- Compatible with standard 1½" or 2" NPT threads.
- Swage fittings utilize APT's proven swivel and double Viton O-ring design, similar to APT clamshell fittings.
- 100 psi rated working pressure.
- Biofuel approved (E85 and biodiesel).



XP Male Swage Swivel Pipe Fittings

The APT innovative swage fitting is designed with the same proven technology as our clamshell fittings. Compatible with APT 1½", 1¾" and 2" single and secondary containment piping using standard NPT connection fittings. Manufactured of stainless steel, the APT swage fitting is reliable, easy to install and requires no specialized connection tees or elbows. "XP ONLY" is permanently etched on each stainless steel collar for easy identification.

Note: Use only XP-Series fittings with XP piping.



Model	A	B
MS-XP-SW-150-150	1.50"	2.00"
MS-XP-SW-175-200	1.75"	2.50"
MS-XP-SW-200-200	2.00"	3.00"

Model	Description
MS-XP-SW-150-150	Installs on the end of 1½" single/secondary contained XP pipe with 1½" NPT
MS-XP-SW-175-200	Installs on the end of 1¾" single/secondary contained XP pipe with 2" NPT
MS-XP-SW-200-200	Installs on the end of 2" single/secondary contained XP pipe with 2" NPT

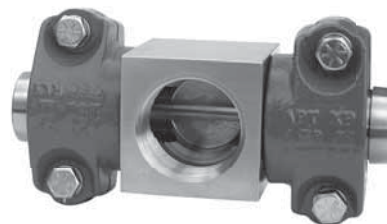
Advantages

- Ideal for retrofit installations where containment sump has limited space or a narrow base.
- Eliminate threaded pipe joints inside of containment space; freeing up valuable space in tight quarters.
- Reduce installation time.
- Stainless steel design allows use with any fueling application.
- Available in non-swivel clamshell version for use with XP-150 pipe.
- This installation can be completed in less than 16" of space.



XP Clamshell Non-Swivel Tee and Elbow Pipe Fittings

Installing flexible pipe inside of a narrow-base dispenser sump has never been easier. The XP clamshell non-swivel tee and elbow fittings allow for an easy space-saving installation by enabling an installer to connect flexible pipe directly into a shear valve riser, eliminating the need for extra galvanized fittings. By eliminating the galvanized fittings, you also reduce the amount of potential leak points, giving you peace of mind that your installation is secure. With the tee and elbow fittings you can complete an XP pipe installation inside of a sump in less than 16" of linear space. The stainless steel design of the fittings makes them an ideal solution for any fueling application.



Model	Description
TEE-XP-150	XP tee clamshell non-swivel pipe fitting
ELB-XP-150	XP elbow clamshell non-swivel pipe fitting

End Connections and Fittings

Our objective is to utilize standard fittings whenever possible. Consequently, all APT swivel and non-swivel fittings are compatible with standard 1½", 2" and 2½" NPT plumbing fittings that can be purchased in your area.



Galvanized End Connections and Fittings

Model	Description
GC-150	Galvanized cap, 1½" NPT
GC-200	Galvanized cap, 2" NPT
GE90-150	Galvanized elbow, 90°, 1½" NPT
GE90-200	Galvanized elbow, 90°, 2" NPT
GE90-215	Galvanized reducing elbow, 90°, 2" NPT × 1½" NPT
GE90-252	Galvanized reducing elbow, 90°, 2½" NPT × 2" NPT
GHB-200-150	Galvanized Hex bushing, 2" NPT × 1½" NPT
GT-150	Galvanized tee, 1½" NPT
GT-200	Galvanized tee, 2" NPT
GT-215	Galvanized reducing tee, 2" × 2" × 1½" NPT
GT-252	Galvanized reducing tee, 2½" × 2½" × 2" NPT
GU-150	Galvanized union, 1½" NPT
GU-200	Galvanized union, 2" NPT

Stainless Steel End Connections and Fittings*

Model	Description
SSC-150	Stainless steel cap, 1½" NPT
SSC-200	Stainless steel cap, 2" NPT
SSE90-150	Stainless steel elbow, 90°, 1½" NPT
SSE90-200	Stainless steel elbow, 90°, 2" NPT
SSHP-150	Stainless steel square head plug, 1½" NPT
SSHP-200	Stainless steel square head plug, 2" NPT
SST-150	Stainless steel tee, 1½" NPT
SST-200	Stainless steel tee, 2" NPT
SSHB-200-150	Stainless steel Hex bushing, 2" NPT × 1½" NPT
SSU-150	Stainless steel union, 1½" NPT
SSU-200	Stainless steel union, 2" NPT

*Contact Customer Service for availability and lead times on all stainless steel end connections and fittings.

Advantages

- Fittings are galvanized to prevent corrosion.
- Fittings are completely interchangeable with standard 1½", 2" and 2½" NPT fittings.
- Stainless steel fittings biofuel approved (E85 and biodiesel).

Bushings

Model	Description
GHB-200-150	Galvanized Hex bushing, 2" NPT × 1½" NPT
SSHB-200-150	Stainless steel Hex bushing, 2" NPT × 1½" NPT

Caps

Model	Description
GC-150	Galvanized cap, 1½" NPT
GC-200	Galvanized cap, 2" NPT
SSC-150	Stainless steel cap, 1½" NPT
SSC-200	Stainless steel cap, 2" NPT

Elbows

Model	Description
GE90-150	Galvanized elbow, 90°, 1½" NPT
GE90-200	Galvanized elbow, 90°, 2" NPT
GE90-215	Galvanized reducing elbow, 90°, 2" NPT × 1½" NPT
GE90-252	Galvanized reducing elbow, 90°, 2½" NPT × 2" NPT
SSE90-150	Stainless steel elbow, 90°, 1½" NPT
SSE90-200	Stainless steel elbow, 90°, 2" NPT

Plugs

Model	Description
SSSHP-150	Stainless steel square head plug, 1½" NPT
SSSHP-200	Stainless steel square head plug, 2" NPT

Tees

Model	Description
GT-150	Galvanized tee, 1½" NPT
GT-200	Galvanized tee, 2" NPT
GT-215	Galvanized reducing tee, 2" × 2" × 1½" NPT
GT-252	Galvanized reducing tee, 2½" × 2½" × 2" NPT
SST-150	Stainless steel tee, 1½" NPT
SST-200	Stainless steel tee, 2" NPT

Unions

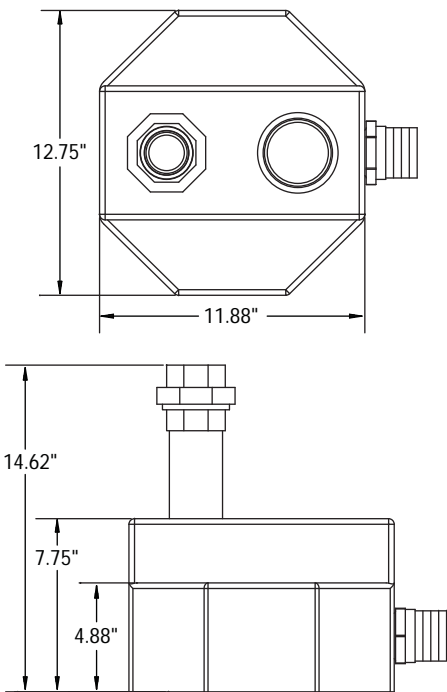
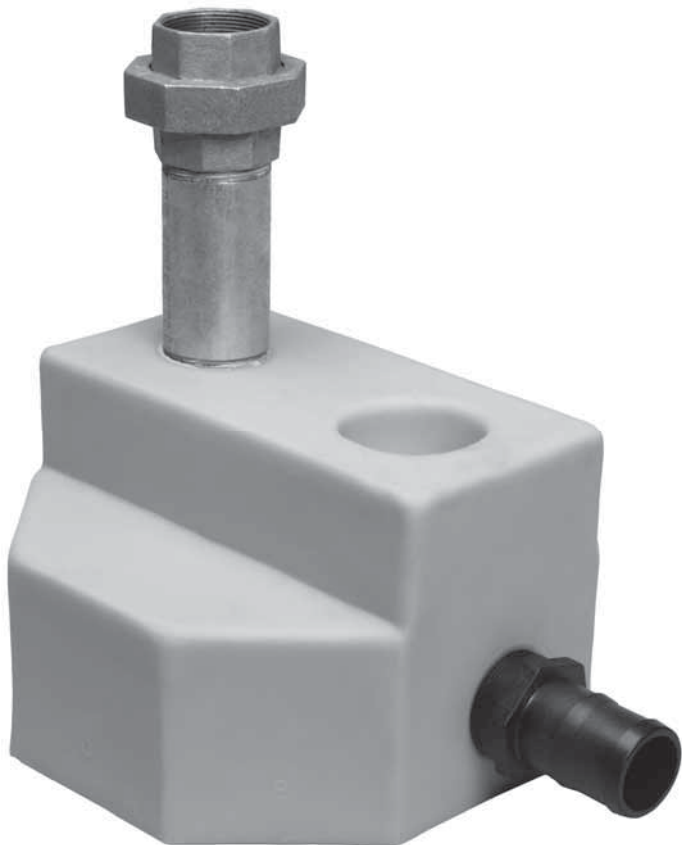
Model	Description
GU-150	Galvanized union, 1½" NPT
GU-200	Galvanized union, 2" NPT
SSU-150	Stainless steel union, 1½" NPT
SSU-200	Stainless steel union, 2" NPT



2" Vent Conversion Box Fittings

VCF-200 vent box can be used along with XP-Series 2" single wall pipe for use in venting tanks.

Piping & Containment



Model	Description
VNC-200	2" nylon male nipple
V90-200	2" nylon barbed elbow
VT-200	2" nylon barbed tee
VCF-200	Vent conversion box with 2" nylon nipple and 2" galvanized riser with union

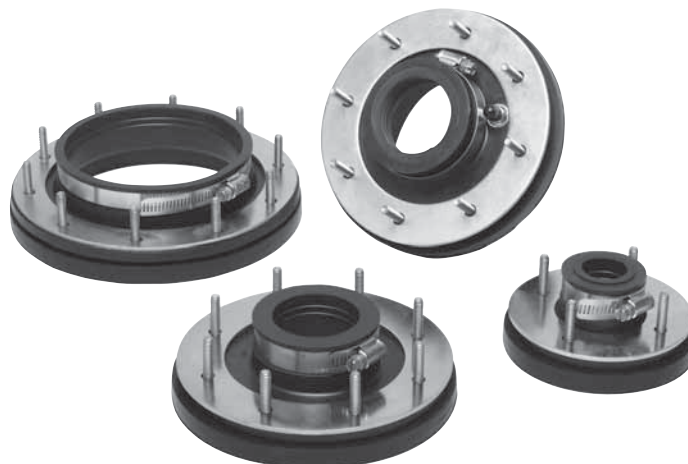
Advantages

- Designed to be used with APT product piping, the entry boots are also ideal for use with rigid piping and electrical conduits.
- Flexible entry boots available in sizes from ½" through 4".
- Ducted entry boots available in sizes from 1½" through 2½". APT offers these ducted entry boots in an air testable version for easy testing of the 4" corrugated ducting.
- Boot size designations correspond directly to the pipe size being used.
- Any boot for a single wall pipe can be converted to a boot for a double wall pipe by simply removing the insert in the pipe opening.
- Entry boot can be serviced from inside the sump, eliminating the need for sump excavation.
- Made from oil- and gasoline-resistant nitrile rubber.
- Will work on round sumps of 36" or larger diameter.

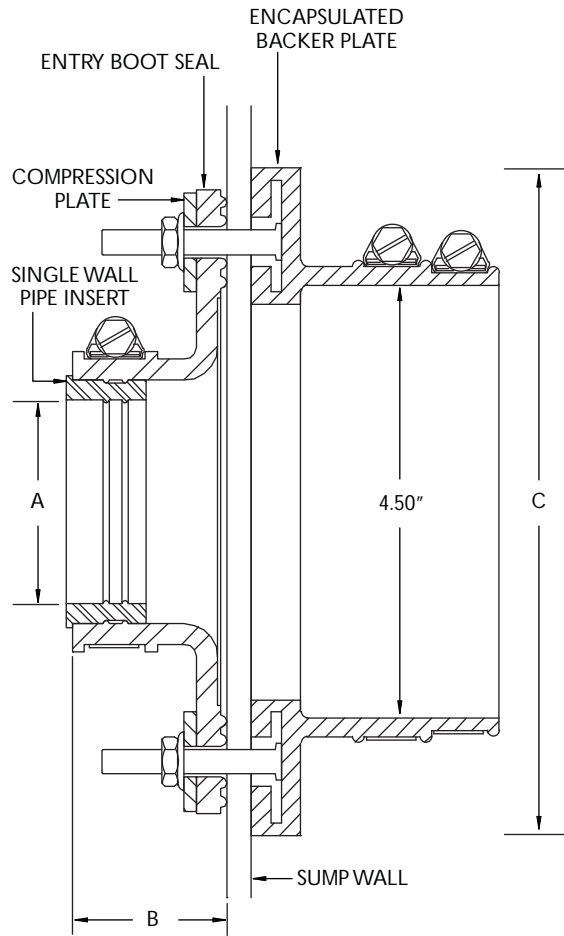
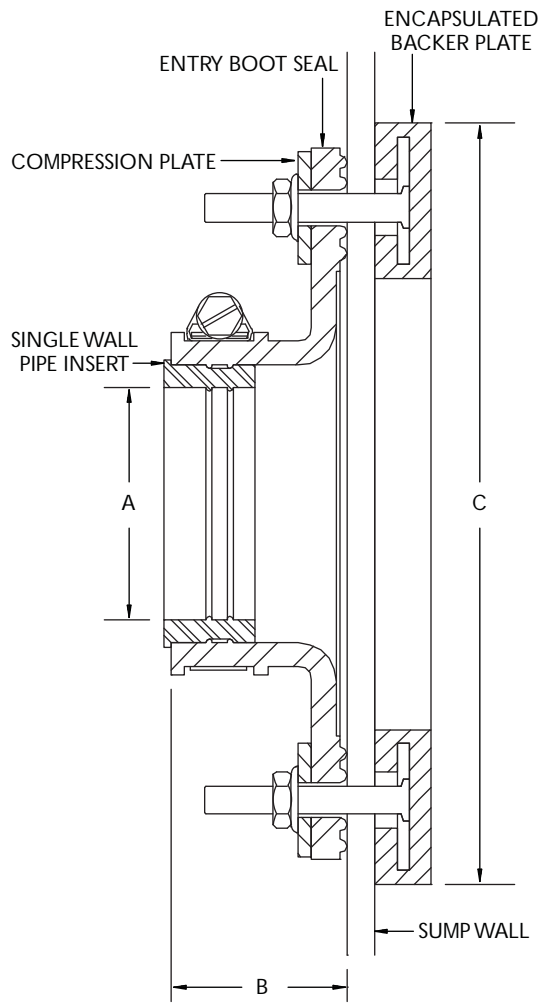


Flexible Entry Boots

APT flexible entry boots are two-piece boots that double the sealing power of your entry boots. Stainless steel studs and corrosion-resistant nuts and washer plates make for the highest quality entry boot. APT offers a complete line of sizes for ½" through 4" single and secondary containment pipe. The 1½" through 2½" sizes are also available in a ducted boot version to accommodate the use of APT DCT-400 corrugated ducting for easy retractability.



Model	Description
FEB-050-D	Flexible entry boot for ½" electrical conduit
FEB-050-SC	Flexible entry boot for ¾" electrical conduit
FEB-075-D	Flexible entry boot for ¾" and 1" electrical conduit
FEB-075-SC	Flexible entry boot for 1" electrical conduit
FEB-100-D	Flexible entry boot for XP-100-D
FEB-100-SC	Flexible entry boot for XP-100-SC
FEB-150-D	Flexible entry boot for XP-150-D
FEB-150-SC	Flexible entry boot for XP-150-SC
FEB-175-D	Flexible entry boot for XP-175-D
FEB-175-SC	Flexible entry boot for XP-175-SC and 2" single wall fiberglass
FEB-200-D	Flexible entry boot for XP-200-D
FEB-200-SC	Flexible entry boot for XP-200-SC
FEB-250-SC	Flexible entry boot for XP-250-SC
FEB-300	Flexible entry boot for 3" single wall fiberglass
FEB-300-R	Flexible entry boot for 3" single wall fiberglass
FEB-400-R	Flexible entry boot for 4" single wall fiberglass
FEB-400-F	Flexible entry boot for 4" double wall pipe
Model	Description
DEB-150-D	Ducted entry boot for XP-150-D
DEB-150-SC	Ducted entry boot for XP-150-SC
DEB-175-D	Ducted entry boot for XP-175-D
DEB-175-SC	Ducted entry boot for XP-175-SC
DEB-200-D	Ducted entry boot for XP-200-D
DEB-200-SC	Ducted entry boot for XP-200-SC
DEB-250-SC	Ducted entry boot for P-250-SC
Model	Description
DEB-150-DA	Air testable ducted entry boot for XP-150-D
DEB-150-SCA	Air testable ducted entry boot for XP-150-SC
DEB-175-DA	Air testable ducted entry boot for XP-175-D
DEB-175-SCA	Air testable ducted entry boot for XP-175-SC
DEB-200-DA	Air testable ducted entry boot for XP-200-D
DEB-252-DA	Air testable ducted entry boot for XP-200-SC and P-250-D
89510101	Ducting insert
89510201	Ducting v-seal



Flexible Entry Boots

Model	A	B	C	Mtg. Hole Size	Mtg. Studs
FEB-050-D	0.84"	1.50"	4.75"	2.00"	4
FEB-050-SC	1.05"	1.50"	4.75"	2.00"	4
FEB-075-D	1.05"	1.50"	4.75"	2.00"	4
FEB-075-SC	1.32"	1.50"	4.75"	2.00"	4
FEB-100-D	1.32"	1.50"	4.75"	2.00"	4
FEB-100-SC	1.70"	1.50"	4.75"	2.00"	4
FEB-150-D	1.75"	1.50"	6.75"	3.50"	8
FEB-150-SC	2.00"	1.50"	6.75"	3.50"	8
FEB-175-D	2.00"	1.50"	6.75"	3.50"	8
FEB-175-SC	2.40"	1.50"	6.75"	3.50"	8
FEB-200-D	2.50"	1.50"	6.75"	3.50"	8
FEB-200-SC	2.88"	1.50"	6.75"	3.50"	8
FEB-250-SC	3.24"	1.50"	6.75"	3.50"	8
FEB-300	3.50"	1.50"	8.00"	3.50"	10
FEB-300-R	3.50"	1.50"	6.75"	3.50"	8
FEB-400-R	4.50"	1.50"	8.00"	5.50"	10
FEB-400-F	4.94"	1.50"	8.00"	5.50"	10

Ducted Entry Boots

Model	A	B	C	Mtg. Hole Size	Mtg. Studs
DEB-150-D	1.75"	1.50"	6.75"	3.50"	8
DEB-150-SC	2.00"	1.50"	6.75"	3.50"	8
DEB-175-D	2.00"	1.50"	6.75"	3.50"	8
DEB-175-SC	2.40"	1.50"	6.75"	3.50"	8
DEB-200-SC	2.88"	1.50"	6.75"	3.50"	8
DEB-250-D	3.00"	1.50"	6.75"	3.50"	10
DEB-250-SC	3.24"	1.50"	6.75"	3.50"	10

Air Testable

Model	A	B	C	Mtg. Hole Size	Mtg. Studs
DEB-150-DA	1.75"	1.50"	6.75"	3.50"	8
DEB-150-SCA	2.00"	1.50"	6.75"	3.50"	8
DEB-175-DA	2.00"	1.50"	6.75"	3.50"	8
DEB-175-SCA	2.40"	1.50"	6.75"	3.50"	8
DEB-200-DA	2.50"	1.50"	8.00"	5.50"	10
DEB-252-DA	3.00"	1.50"	8.00"	5.50"	10
DEB-250-SCA	3.24"	1.50"	8.00"	5.50"	10

Advantages

- Designed to be used with APT product piping, the entry boots are also ideal for use with rigid piping and electrical conduits.
- Flexible double entry boots are ideal for generator, fuel oil return and feed line applications.
- Boot can be serviced from inside the sump so there is no need to break concrete.
- Made from oil- and gasoline-resistant nitrile rubber.
- Allows two pipes to go through one boot for easier installation.
- Combination of two different pipe diameters through one boot can be easily converted by simply removing the insert in the pipe opening.

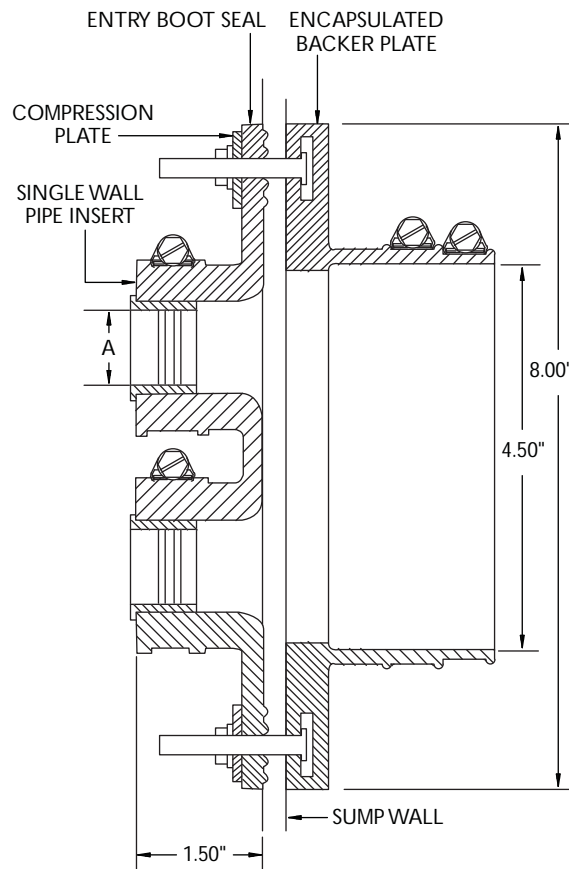
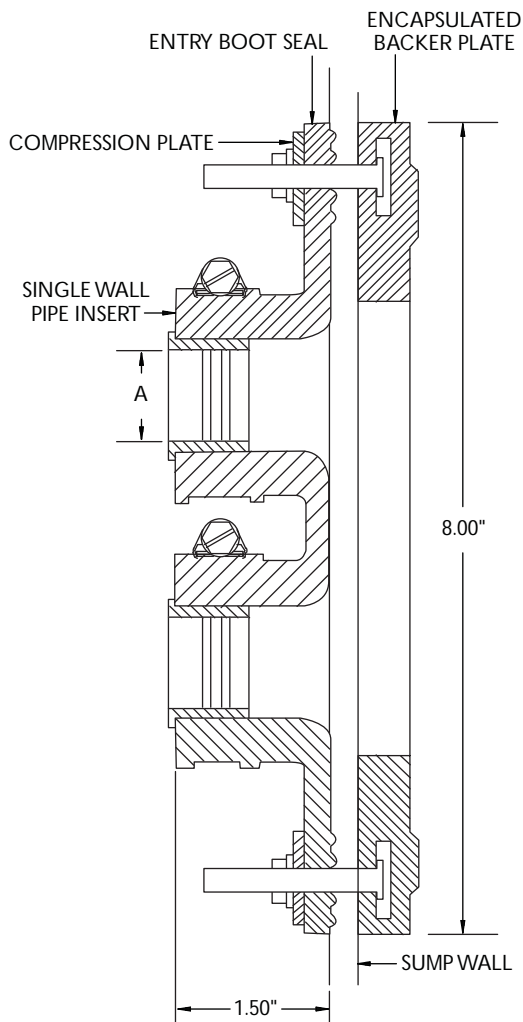


Flexible Double Entry Boots

The APT flexible double entry boot allows two pipes or conduits to go through a single sump entry boot opening. The APT boot comes in two different styles, the flexible double boot for non-ducted applications and the ducted double boot when using APT DCT-400 corrugated piping. Double entry boots accommodate $\frac{3}{4}$ " and 1" pipe sizes or a combination of the two.



Model	Description
FDB-075-D	Flexible double boot for $\frac{3}{4}$ " electrical conduit
FDB-075-SC	Flexible double boot for P-075-SC
FDB-100-D	Flexible double boot for XP-100-D or 1" electrical conduit
FDB-100-SC	Flexible double boot for XP-100-SC
Model	Description
DDB-075-D	Ducted double boot for $\frac{3}{4}$ " electrical conduit
DDB-075-SC	Ducted double boot for P-075-SC
DDB-100-D	Ducted double boot for XP-100-D or 1" electrical conduit
DDB-100-SC	Ducted double boot for XP-100-SC
89510101	Ducting insert
89510201	Ducting v-seal



Flexible Double Entry Boots

Model	A	Mtg. Hole Size	Mtg. Studs
FDB-075-D	1.05"	5.50"	10
FDB-075-SC	1.32"	5.50"	10
FDB-100-D	1.32"	5.50"	10
FDB-100-SC	1.70"	5.50"	10

Ducted Double Entry Boots

Model	A	Mtg. Hole Size	Mtg. Studs
DDB-075-D	1.05"	5.50"	10
DDB-075-SC	1.32"	5.50"	10
DDB-100-D	1.32"	5.50"	10
DDB-100-SC	1.70"	5.50"	10

Advantages

- Designed to be used with APT product piping, the bulkhead boots are also ideal for use with rigid piping and electrical conduits.
- Flexible bulkhead boots available in sizes from ½" through 2½". Ducted bulkhead boots available in sizes from 1½" through 2½".
- Boot size designations correspond directly to the pipe size being used.
- Any boot for a single wall pipe can be converted to a boot for a double wall pipe by simply removing the insert in the pipe opening.
- Bulkhead boots can be serviced from inside the sump, eliminating the need for sump excavation.
- Made from oil- and gasoline-resistant nitrile rubber.

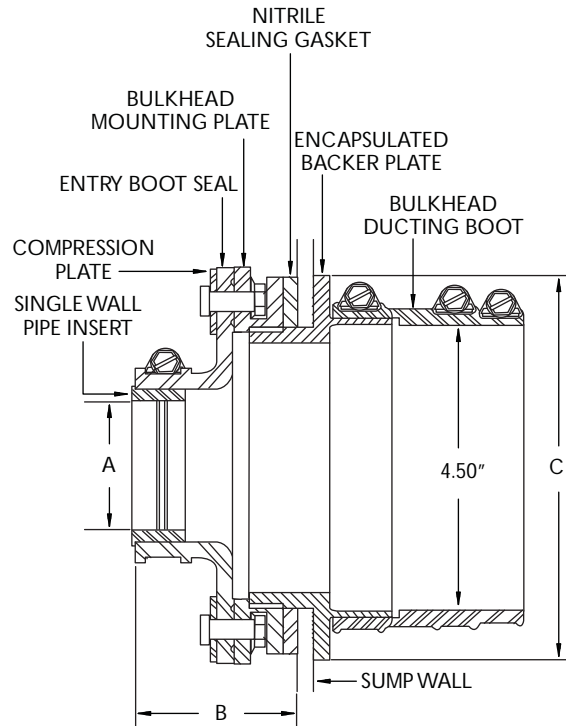
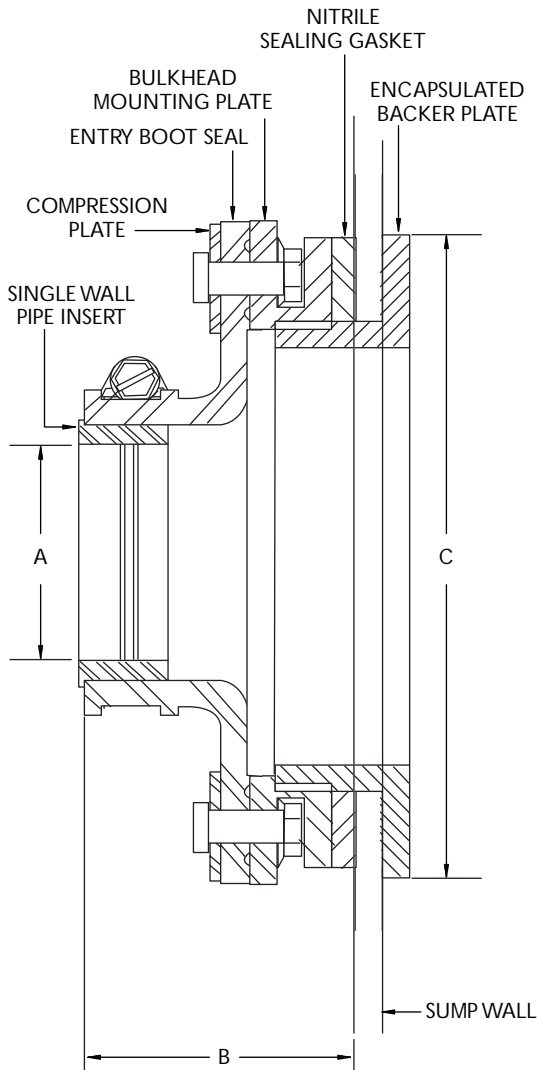


Flexible Bulkhead Boots

APT bulkhead boots boast an enlarged gasket area to seal against the sump wall and incorporate the proven advantages of the APT standard flexible entry boot seal. The bulkhead boot requires only a single hole to be drilled for installation, reducing labor time and cost. APT offers a complete line of sizes for ½" through 2½" single and secondary contained pipe. The 1½" through 2½" sizes are also available in a ducted boot version to accommodate the use of APT DCT-400 corrugated ducting for easy retractability.



Model	Description
FBB-050-D	Flexible bulkhead boot for ½" electrical conduit
FBB-050-SC	Flexible bulkhead boot for ¾" electrical conduit
FBB-075-D	Flexible bulkhead boot for P-075-D, ¾" and 1" electrical conduit
FBB-075-SC	Flexible bulkhead boot for P-075-SC, 1" electrical conduit
FBB-100-D	Flexible bulkhead boot for XP-100-D
FBB-100-SC	Flexible bulkhead boot for XP-100-SC
FBB-150-D	Flexible bulkhead boot for XP-150-D
FBB-150-SC	Flexible bulkhead boot for XP-150-SC
FBB-175-D	Flexible bulkhead boot for XP-175-D
FBB-175-SC	Flexible bulkhead boot for XP-175-SC and 2" fiberglass
FBB-200-D	Flexible bulkhead boot for XP-200-D
FBB-200-SC	Flexible bulkhead boot for XP-200-SC
FBB-250-SC	Flexible bulkhead boot for XP-250-SC
Model	Description
DBB-150-D	Ducted bulkhead boot for XP-150-D
DBB-150-SC	Ducted bulkhead boot for XP-150-SC
DBB-175-D	Ducted bulkhead boot for XP-175-D
DBB-175-SC	Ducted bulkhead boot for XP-175-SC
DBB-200-D	Ducted bulkhead boot for XP-200-D
DBB-200-SC	Ducted bulkhead boot for XP-200-SC
DBB-250-SC	Ducted bulkhead boot for P-250-SC
Model	Description
DBB-150-DA	Air testable ducted bulkhead boot for XP-150-D
DBB-150-SCA	Air testable ducted bulkhead boot for XP-150-SC
DBB-175-DA	Air testable ducted bulkhead boot for XP-175-D
DBB-175-SCA	Air testable ducted bulkhead boot for XP-175-SC
89510101	Ducting insert
89510201	Ducting v-seal



Flexible Bulkhead Boots

Model	A	B	C	Mtg. Hole Size
FBB-050-D	0.84"	2.50"	4.00"	2.38"
FBB-050-SC	1.05"	2.50"	4.00"	2.38"
FBB-075-D	1.05"	2.50"	4.00"	2.38"
FBB-075-SC	1.32"	2.50"	4.00"	2.38"
FBB-100-D	1.32"	2.50"	4.00"	2.38"
FBB-100-SC	1.70"	2.50"	4.00"	2.38"
FBB-150-D	1.75"	2.50"	6.00"	4.38"
FBB-150-SC	2.00"	2.50"	6.00"	4.38"
FBB-175-D	2.00"	2.50"	6.00"	4.38"
FBB-175-SC	2.40"	2.50"	6.00"	4.38"
FBB-200-D	2.50"	2.50"	6.00"	4.38"
FBB-200-SC	2.88"	2.50"	6.00"	4.38"
FBB-250-SC	3.24"	2.50"	6.00"	4.38"

Ducted Bulkhead Boots

Model	A	B	C	Mtg. Hole Size
DBB-150-D	1.75"	2.50"	6.00"	4.38"
DBB-150-SC	2.00"	2.50"	6.00"	4.38"
DBB-175-D	2.00"	2.50"	6.00"	4.38"
DBB-175-SC	2.40"	2.50"	6.00"	4.38"
DBB-200-D	2.50"	2.50"	6.00"	4.38"
DBB-200-SC	2.88"	2.50"	6.00"	4.38"
DBB-250-SC	3.24"	2.50"	6.00"	4.38"

Air Testable

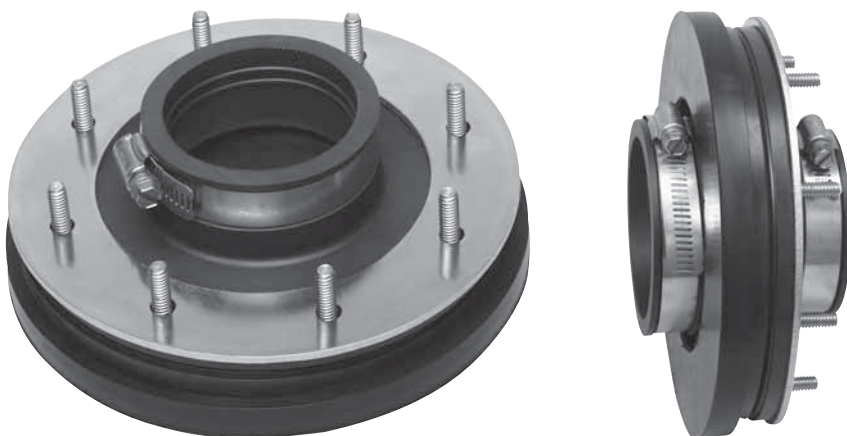
Model	A	B	C	Mtg. Hole Size
DBB-150-DA	1.75"	2.50"	6.00"	4.38"
DBB-150-SCA	2.00"	2.50"	6.00"	4.38"
DBB-175-DA	2.00"	2.50"	6.00"	4.38"
DBB-175-SCA	2.40"	2.50"	6.00"	4.38"

Advantages

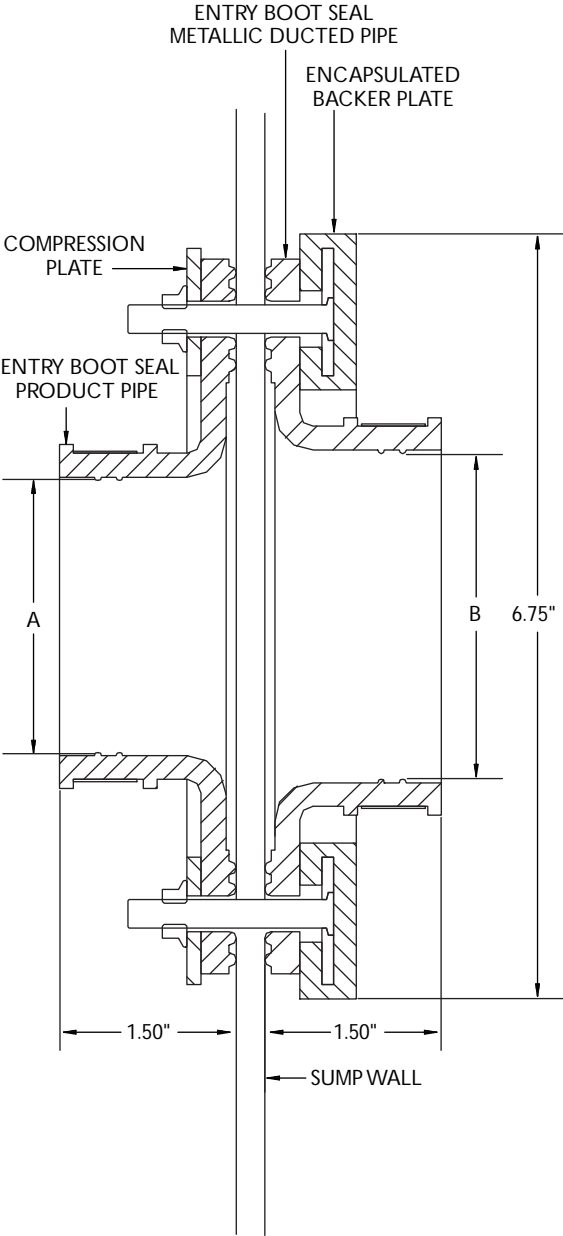
- Same proven design features of APT standard flexible entry boots.
- Inner seal provides watertight seal around the single or secondary contained product pipe.
- The outer seal secures the MD layer to the sump wall.
- Double seals offer additional security for the harsh conditions of marina and aboveground applications.
- Made from gas- and oil-resistant nitrile rubber.
- Will work on round sumps of 36" or larger diameter.

MD-Series Flexible Entry Boots

When using the APT metallic ducted (MD) pipe, the use of the MD-Series flexible entry boot is required. These boots are similar in design to our standard flexible entry boots, except they include an additional seal that faces outward to secure the MD layer of the pipe to the sump wall, and terminate the single or secondary contained piping on the inside of the sump for a watertight seal.



Model	Description
FEB-075-MDD	Flexible entry boot for P-075-MD
FEB-075-MD	Flexible entry boot for P-075-MD
FEB-100-MDD	Flexible entry boot for XP-100-MDD
FEB-100-MD	Flexible entry boot for XP-100-MD
FEB-150-MDD	Flexible entry boot for XP-150-MDD
FEB-150-MD	Flexible entry boot for XP-150-MD
FEB-175-MDD	Flexible entry boot for XP-175-MDD
FEB-175-MD	Flexible entry boot for XP-175-MD
FEB-200-MDD	Flexible entry boot for XP-200-MDD
FEB-200-MD	Flexible entry boot for XP-200-MD



MD-Series Flexible Entry Boots

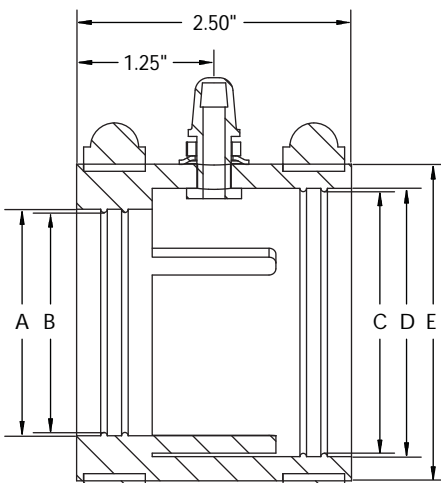
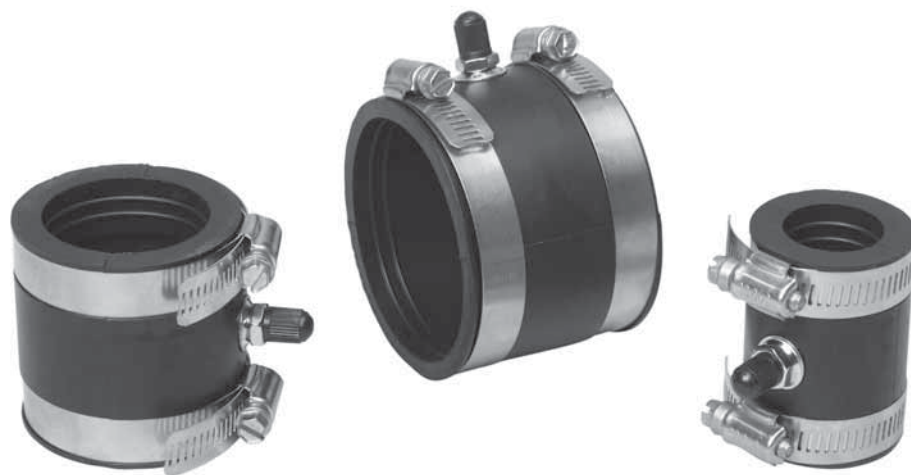
Model	A	B	Mtg. Hole Size	Mtg. Studs
FEB-075-MDD	1.05"	1.70"	2.00"	4
FEB-075-MD	1.32"	2.00"	3.50"	8
FEB-100-MDD	1.32"	2.00"	3.50"	8
FEB-100-MD	1.70"	2.40"	3.50"	8
FEB-150-MDD	1.75"	2.40"	3.50"	8
FEB-150-MD	2.00"	2.88"	3.50"	8
FEB-175-MDD	2.00"	2.88"	3.50"	8
FEB-175-MD	2.40"	2.88"	3.50"	8
FEB-200-MDD	2.50"	3.50"	3.50"	8
FEB-200-MD	2.88"	3.50"	3.50"	8

Advantages

- Secondary test boots slip over the end of the pipe prior to installation of end fittings.
- Boots are manufactured using fuel-resistant nitrile rubber and employ brass air chucks and stainless steel clamps for maximum corrosion resistance.
- Boots are easily clamped down with a screwdriver or 5/16" nut driver, forming an airtight chamber between the primary pipe and the secondary jacket.
- The secondary chamber is pressurized to 5-8 psi through air chuck to test system integrity.
- After pressure testing, the boots remain on the pipe for future use but are pulled back to permit back-flow of fuel leaks to the tank sump.

Clamshell Secondary Test Boots

APT secondary test boots are designed for testing the integrity of secondary contained flexible piping when using APT clamshell fittings. Each boot has an air chuck for applying air pressure to the secondary containment jacket. Placing a boot on each end of the secondary containment jacket forms an airtight chamber for testing. After the testing is completed, slide the boots back on the pipe to open the secondary system. The boots remain on the pipe available for future testing as required by local regulations.

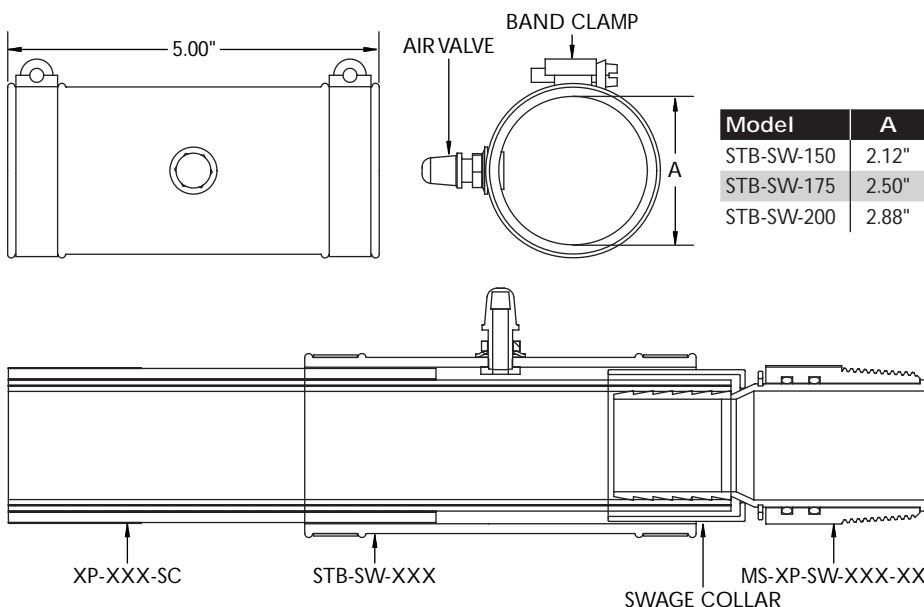


Model	A	B	C	D	E
STB-075	1.10"	1.05"	1.32"	1.38"	1.82"
STB-100	1.38"	1.32"	1.70"	1.76"	2.20"
STB-150	1.81"	1.75"	2.00"	2.06"	2.50"
STB-175	2.06"	2.00"	2.38"	2.44"	2.88"
STB-200	2.56"	2.50"	2.88"	2.94"	3.38"
STB-250	3.00"	2.94"	3.18"	3.24"	3.68"

Model	Description
STB-075	Secondary test boot for P-075-SC pipe
STB-100	Secondary test boot for XP-100-SC pipe
STB-150	Secondary test boot for XP-150-SC pipe
STB-175	Secondary test boot for XP-175-SC pipe
STB-200	Secondary test boot for XP-200-SC pipe

Swage Secondary Air Test Boots

APT secondary test boots are designed for testing the integrity of SC flexible piping when using the APT swage fitting. Each boot has an air chuck for applying air pressure to the SC jacket to form an airtight chamber for testing purposes. After testing is complete, slide the boots back on the pipe system. The boots remain on the pipe available for future testing as required by local regulations.

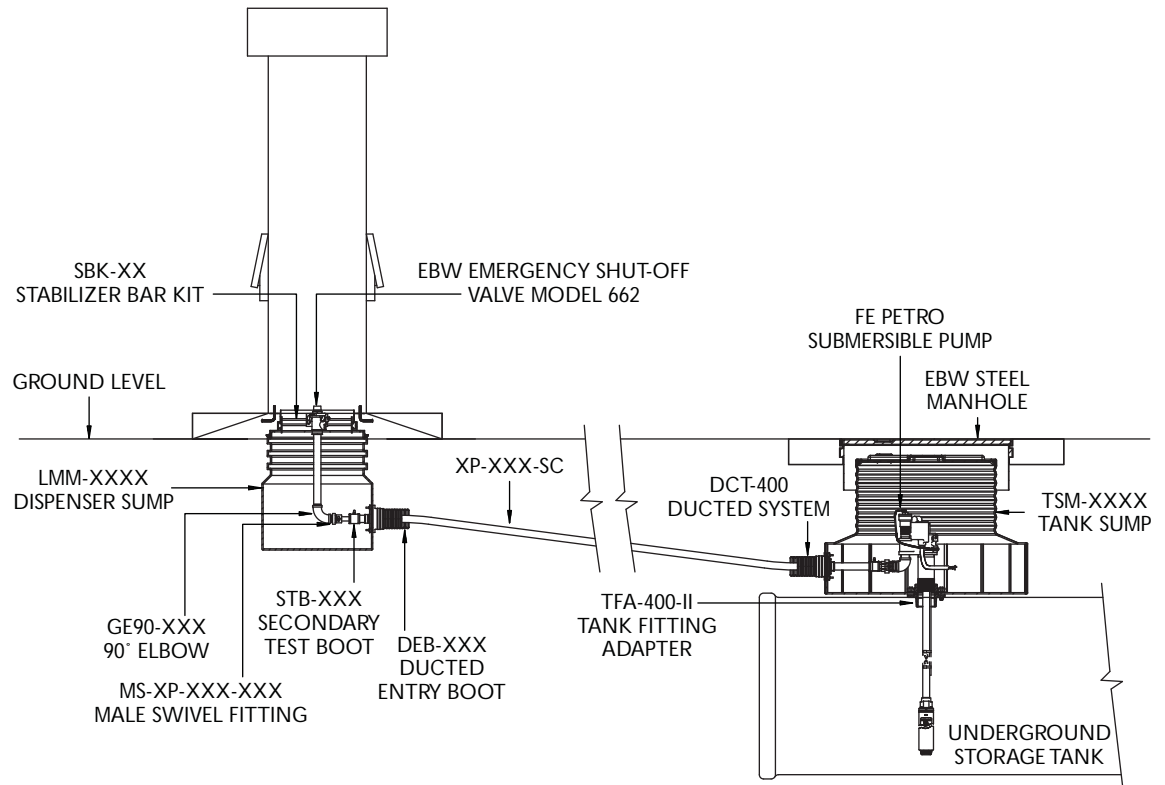


Advantages

- Secondary test boots slip over the end of the pipe prior to installation of end fittings.
- Boots are manufactured using fuel-resistant nitrile rubber and employ brass air chucks and stainless steel clamps for maximum corrosion resistance.
- Boots are easily clamped down with a screwdriver or 5/16" nut driver, forming an airtight chamber between the primary pipe and the secondary jacket.
- The secondary chamber is pressurized to 5-8 psi through air chuck to test system integrity.
- After pressure testing, the boots remain on the pipe for future use but are pulled back to permit back-flow of fuel leaks to the tank sump.

Model	Description
STB-SW-150	Secondary test boot for swage XP-150 piping
STB-SW-175	Secondary test boot for swage XP-175 piping
STB-SW-200	Secondary test boot for swage XP-200 piping

Below Grade Typical Application Drawing

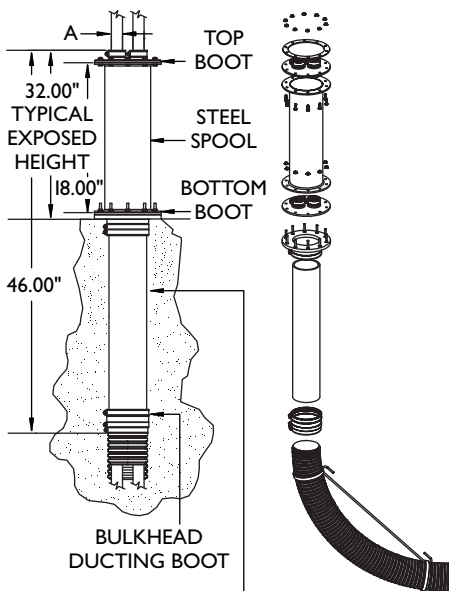
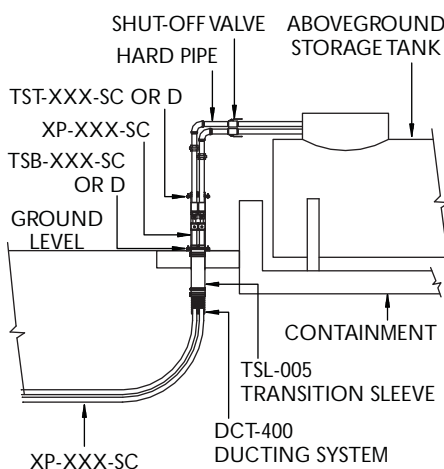


APT Rigid Pipe-Boot Reference Chart

Thin Wall Electrical Conduit	OD	APT Entry Boot
1/2"		FEB-050-D
3/4"		FEB-050-SC
1"		FEB-075-SC
Galvanized Electrical Conduit	OD	APT Entry Boot
1/2"		FEB-050-D
3/4"		FEB-050-SC
1"		FEB-075-SC
Galvanized Pipe	OD	APT Entry Boot
1/2"		FEB-050-D
3/4"		FEB-050-SC
1"		FEB-075-SC
1 1/2"		FEB-150-SC
2"		FEB-175-SC
Fiberglass Piping (Single Wall)	OD	APT Entry Boot
2"		FEB-175-SC
3"	3.50"	FEB-300-R
4"		FEB-400-R
Schedule 40/80 Pipe, Same OD	OD	APT Entry Boot
1/2"		FEB-050-D
3/4"		FEB-050-SC
1"		FEB-075-SC
1 1/4"	1.32"	FEB-100-SC
1 1/2"	1.70"	FEB-150-SC
2"		FEB-175-SC
2 1/2"		FEB-200-SC
3"		FEB-300-R
4"		FEB-400-R

Grade Level Transition Sleeve™

The transition sleeve is the practical, environmentally sound solution for above and below ground supply of generator or boiler applications from remote storage tanks. Steel piping enters the sleeve through APT special flexible double entry boots. It is an economical alternative that allows a straightforward installation with no special tools.



HDPE PIPE LENGTH MAY BE MODIFIED TO SUIT

Transition Sleeve Top Boot Assembly

Model	A	Mtg. Hole Size	Mtg. Studs
TST-075-D	1.05" or 1.32"	5.50"	10
TST-100-D	1.32" or 1.70"	5.50"	10

Transition Sleeve Bottom Boot Assembly

Model	A	Mtg. Hole Size	Mtg. Studs
TSB-100-D	1.32" or 1.70"	5.50"	10
TSB-100-SC	1.70"	5.50"	10
TSB-075-D	1.32" or 1.70"	5.50"	10
TSB-075-SC	1.70"	5.50"	10

Advantages

- Transition sleeve provides the transition for above and below ground level.
- Transition sleeve provides the transition of APT pipe to steel pipe.
- May be additionally used for through-wall installation, above or below ground.
- Low cost alternative to the AST-2922 transition sump.
- Designed to utilize APT dual entry and ducted boots.
- Split design allows aboveground spill or leak containment. Ready access for maintenance or replacement of joint hardware and pipe.
- The transition sleeve can accommodate both $\frac{3}{4}$ " and 1" or combination of both in one run for fill/feed generator applications.

TSL-005 Includes

- Transition sleeve spool, 5" ID.
- HDPE pipe, 18" length, 4" ID.
- Bulkhead ducting boot.
- Hose clamps.
- Blue corrugated ducting, 48" length.
- $\frac{1}{4}$ " formed steel rod.
- Installation instructions.

Model	Description
TSL-005	Transition sleeve (top and bottom boot required, sold separately)
Model	Description
TST-075-D	Transition sleeve top flexible entry boot, $\frac{3}{4}$ " steel pipe
TST-100-D	Transition sleeve top flexible entry boot, 1" steel pipe
Model	Description
TSB-075-D	Transition sleeve bottom flexible entry boot for P-075-D
TSB-075-SC	Transition sleeve bottom flexible entry boot for P-075-SC
TSB-100-D	Transition sleeve bottom flexible entry boot for XP-100-D or 1" conduit
TSB-100-SC	Transition sleeve bottom flexible entry boot for XP-100-SC

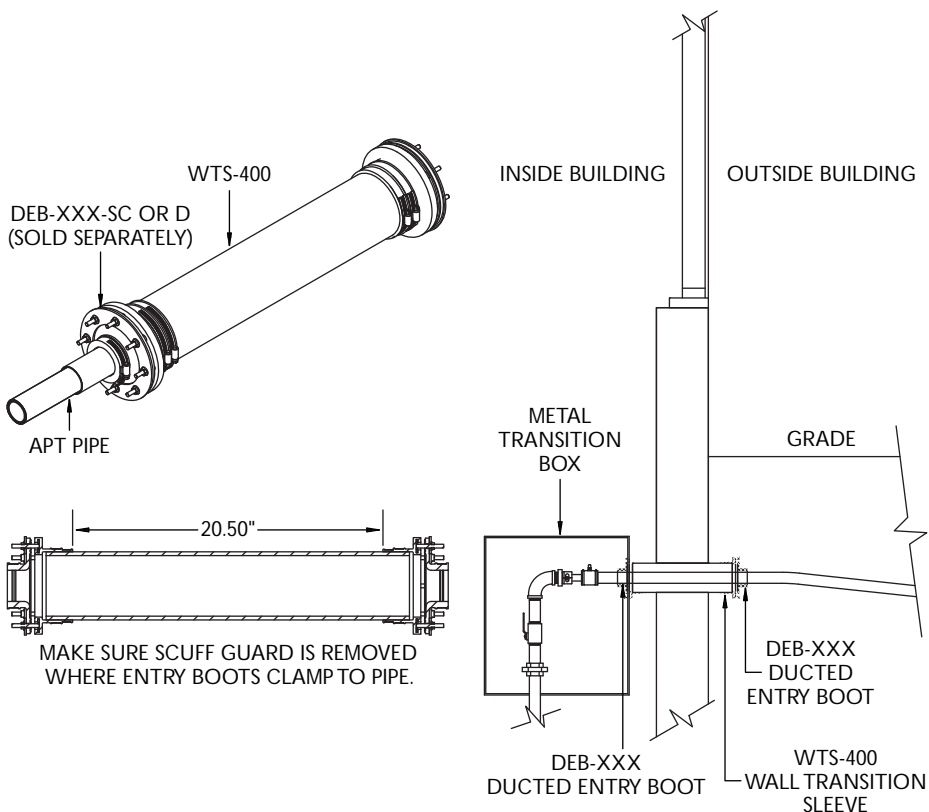
Note: The transition sleeve along with the top and bottom entry boot should be ordered separately.

Advantages

- Transition sleeve used for through-wall installation.
- Low cost alternative.
- Designed to utilize APT ducted entry and single entry flexible boots.
- The transition sleeve can accommodate both $\frac{3}{4}$ " and 1" or a combination of both in one run for fill/feed generator applications.

Wall Transition Sleeve

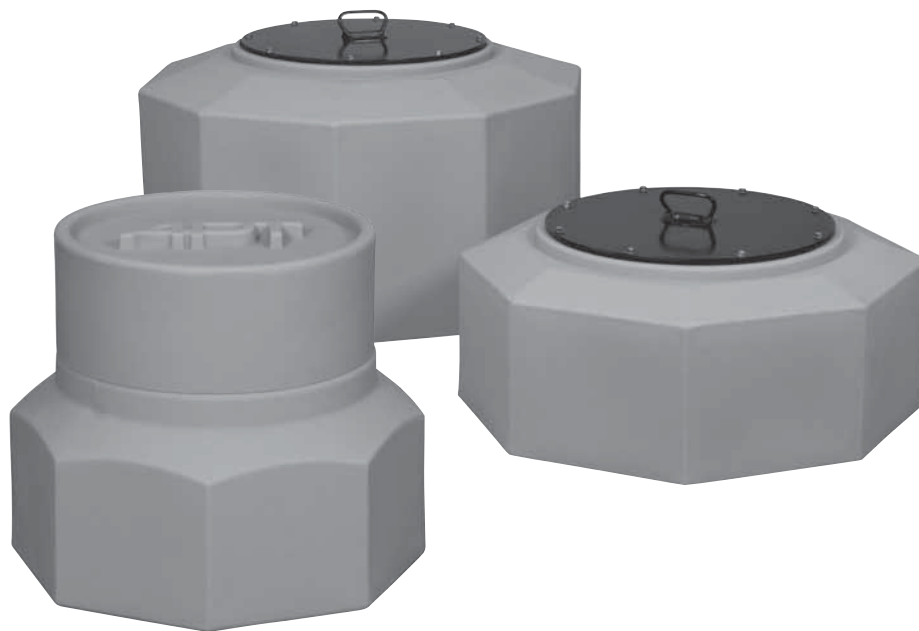
The wall transition sleeve is a practical, environmentally sound solution for below ground generator or boiler applications that pass through the walls of buildings or concrete structures. Piping enters the sleeve through APT's special flexible entry boots. The wall transition sleeve is an economical alternative that allows a straightforward installation with no tools.



Model	Description
WTS-400	Wall transition sleeve (ducted entry boot required, sold separately)

Below Grade Transition Tank Sumps

APT's TS-2430, TS-3630 and TS-4230 tank sumps are ideally suited for low cost retro fits and shallow burial applications. The TS-2430 is ideal for line branching points and for containing piping splices. The 36" or 42" bases provide ample space for submersibles and fittings. The bolt-on gasket-lid combination fits economically under a 30" manway.



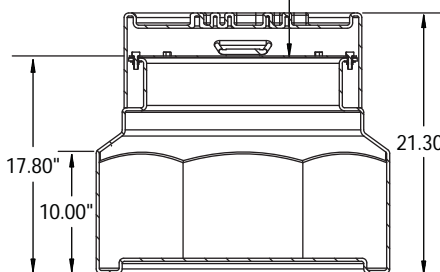
Model	Description
TS-2430	Transition sump, shallow burial, 24" base, fits under a 30" manway
TS-3630	Tank sump, shallow burial, 36" base, fits under a 30" manway
TS-4230	Tank sump, medium burial, 42" base, fits under a 30" manway
TS-KIT	TS-3630/4230 retro fit kit, replacement lid assembly for screw-on polyethylene lids
999-855-55	Replacement gasket

Advantages

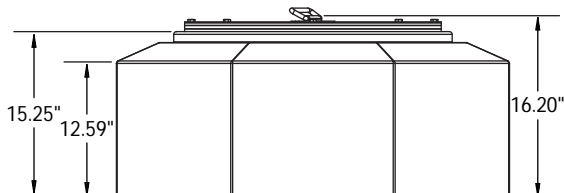
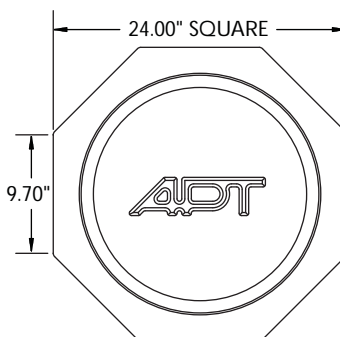
- TS-2430 utilizes an 18" bolt-down watertight lid.
- TS-3630 and TS-4230 utilize a 23½" bolt-down watertight lid.
- High density polyethylene construction is durable and chemical-resistant.
- All TS-Series sumps allow fittings to be installed with ease, while tapered design allows for installation under an economical 30" manway.
- Bolt-down cover can be easily removed for routine inspections.
- One-piece design enhances water resistance.



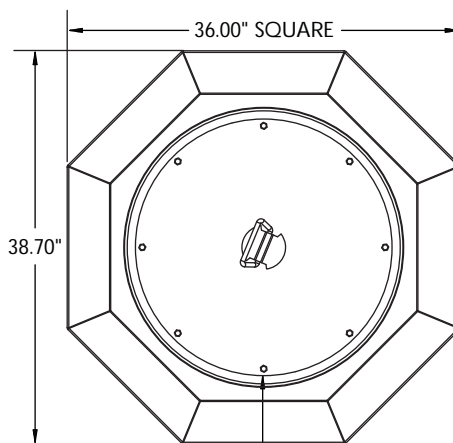
18" BOLT-DOWN RAIN-TIGHT ACCESS COVER



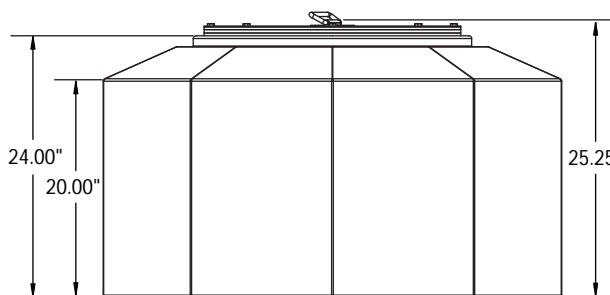
TS-2430



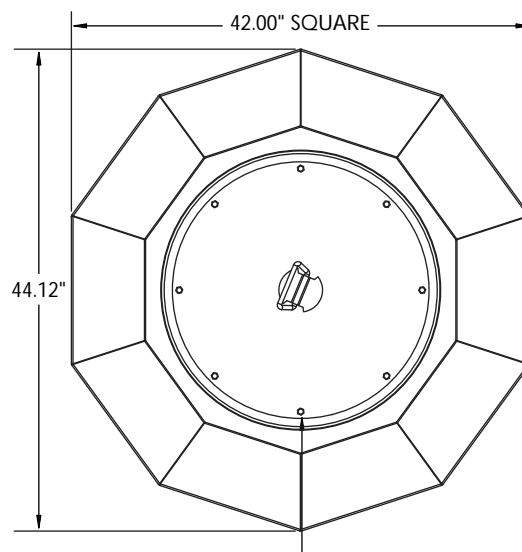
TS-3630



23½" BOLT-DOWN RAIN-TIGHT ACCESS COVER



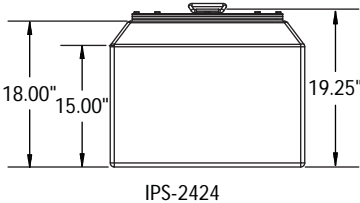
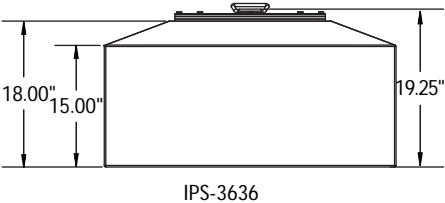
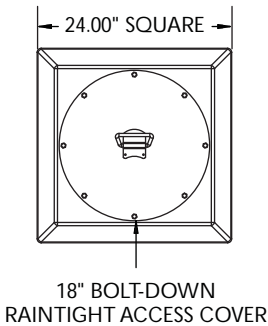
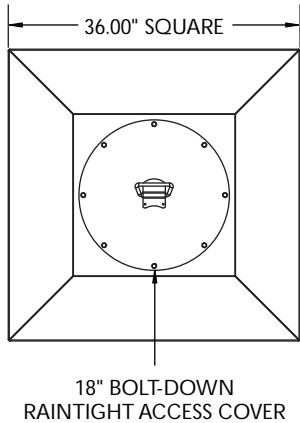
TS-4230



23½" BOLT-DOWN RAIN-TIGHT ACCESS COVER

Below Grade Intermediate Piping Sumps

The APT intermediate piping sump is a multifunctional component in the underground flexible piping system. The IPS-2424 and IPS-3636 can be used as a containment sump for fittings when utilizing a tee between dispenser islands, for contained piping splices, or for line branching points. These sumps are ideal for a low point sensor chamber between USTs and dispenser islands where required.



Model	Description
IPS-2424	Intermediate piping sump, 24" x 24", fits under a 24" manway
IPS-3636	Intermediate piping sump, 36" x 36", fits under a 36" manway
999-855-54	Replacement gasket

Advantages

- 18" bolt-down watertight lid.
- Design is engineered to be multi-functional.
- Sumps are constructed from high density polyethylene, making them durable and chemical-resistant.
- Two sizes available, 24" x 24" square and 36" x 36" square.
- Tapered top allows both intermediate piping sumps to fit securely under a 24" manway.
- One-piece design ensures environmental security and water resistance.

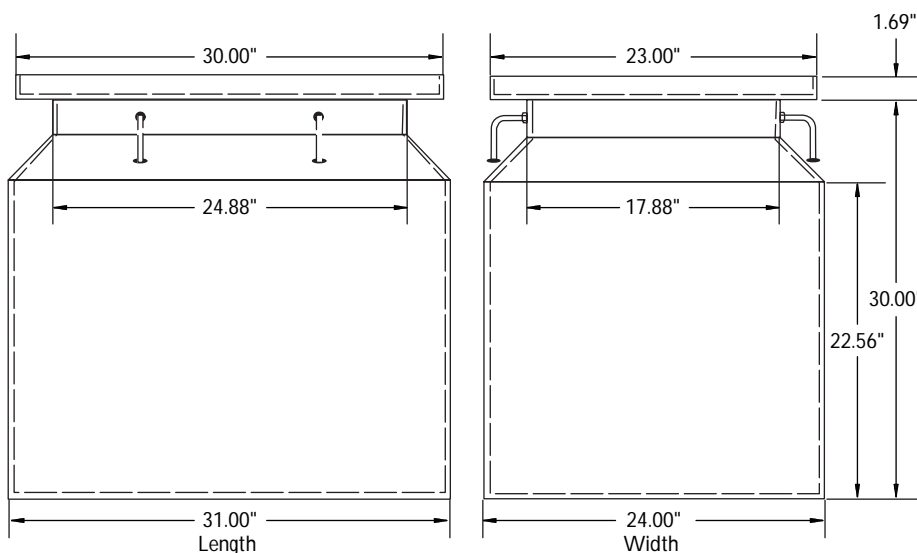
Advantages

- Transition sumps help meet environmental regulations by isolating metal piping from the soil.
- Transition sumps can be installed either inside or outside containment dikes.
- 30" burial depth allows the transition sump to be used as the system low point for leak detection.
- Load rated composite cover.
- Flexible entry boot provides a fueltight and watertight seal around the metal piping and flexible piping as it enters the sump lid and sidewall.
- H-20 load rating. Pipe entries installed in lids negate the load rating.



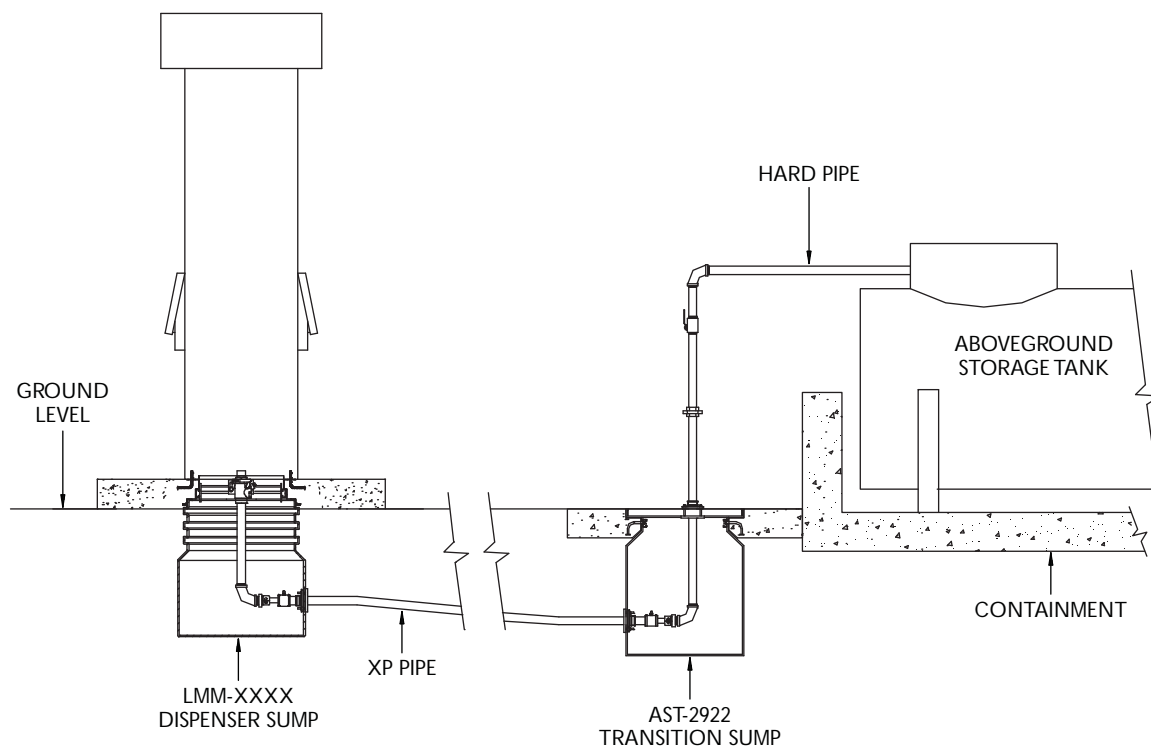
Grade Level Transition Sump

The AST above or below ground transition sump is the practical, environmentally sound solution for remote dispensing from aboveground storage tanks. Steel and flexible piping enter the sump through the APT flexible entry boot. Inside the sump, the steel piping easily connects to flexible piping for a fueltight, continuous run to dispensers or an intermediate sump.



Model	Description
AST-2922	Aboveground storage tank transition sump
999-855-53	Replacement gasket
252-029-23	Replacement AST-2922 lid, grey
IP-400-B	Inspection replacement port, FEB style with replacement well cap

Above Grade Typical Application Drawing



Advantages

- Economically priced one-piece design.
- Ribbed riser allows for simple 3" height adjustments using standard tools.
- Available in deep, medium and shallow burial depth models.
- Utilizes a unique gasket, snap-on lid design.
- Sized to fit under a standard 42" manway.
- Central location for an optional inspection port.
- Lid designed with a large-grip handle for easy removal of the snap-on lid.



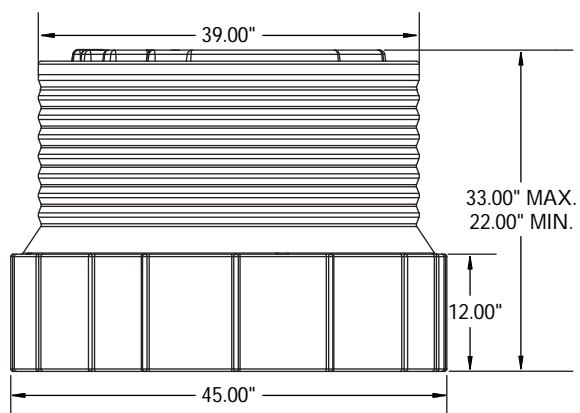
4542 Series One-Piece Tank Sumps

The 4542 Series one-piece tank sump is made of high-density polyethylene with a factory installed gasket snap-on lid. The 16 side panels allow for pipe entry from virtually any direction.

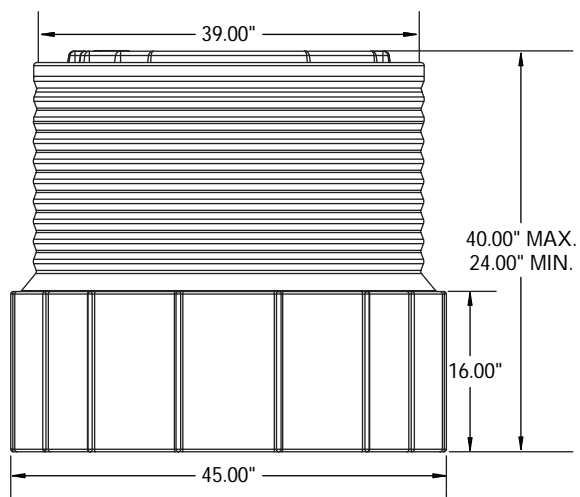
The 4542 Series is available in three burial depths. Each offers an optional inspection port (IP) for easy viewing of the interior of the sump without removal of the lid.



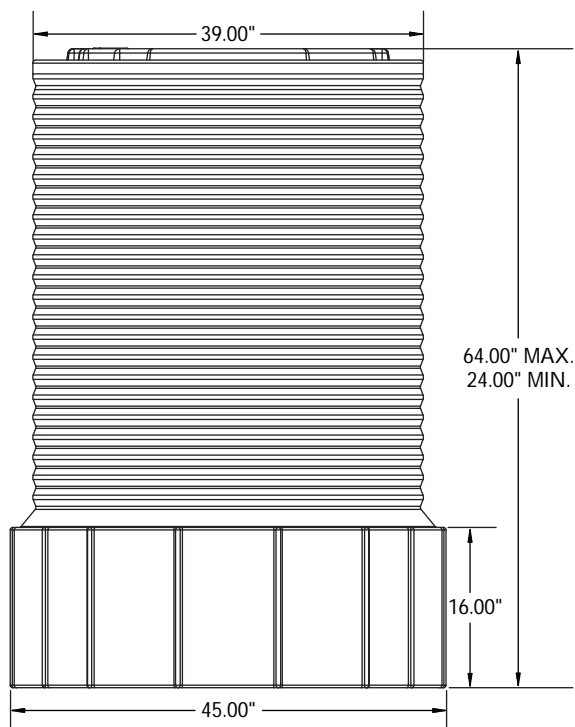
Model	Description
TSD-4542	Tank sump, deep burial, 45" base, fits 42" manway
TSD-4542-IP	TSD-4542 sump with inspection port factory installed
TSM-4542	Tank sump, medium burial, 45" base, fits 42" manway
TSM-4542-IP	TSM-4542 sump with inspection port factory installed
TSS-4542	Tank sump, shallow burial, 45" base, fits 42" manway
TSS-4542-IP	TSS-4542 sump with inspection port factory installed
260-042-09	TSM-4542 sump lid replacement
MA-22	Manway adapter, 22"
MA-24	Manway adapter, 24"
IP-400	Inspection port
IP-400-B	Inspection port, FEP style with well cap



TSS-4542
SHALLOW BURIAL



TSM-4542
MEDIUM BURIAL



TSD-4542
DEEP BURIAL

Advantages

- Economically priced one-piece design.
- Ribbed riser allows for simple 3" height adjustments using standard tools.
- Available in deep, medium and shallow burial depth models.
- Utilizes a unique gasket, snap-on lid design.
- Sized to fit under a standard 36" manway.
- Central location for an optional inspection port.
- Lid designed with a large-grip handle for easy removal of the snap-on lid.



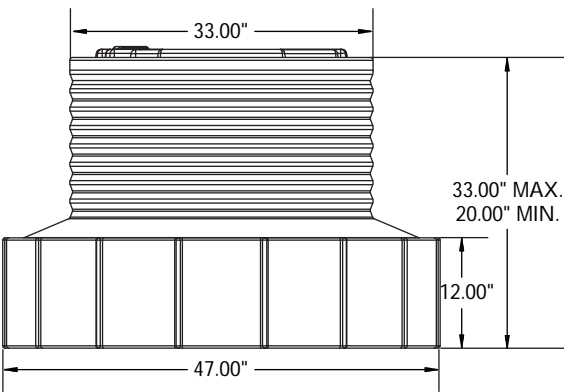
4736 Series One-Piece Tank Sumps

The 4736 Series one-piece tank sump is made of high-density polyethylene with a factory installed gasket snap-on lid. The 16 side panels allow for pipe entry from virtually any direction.

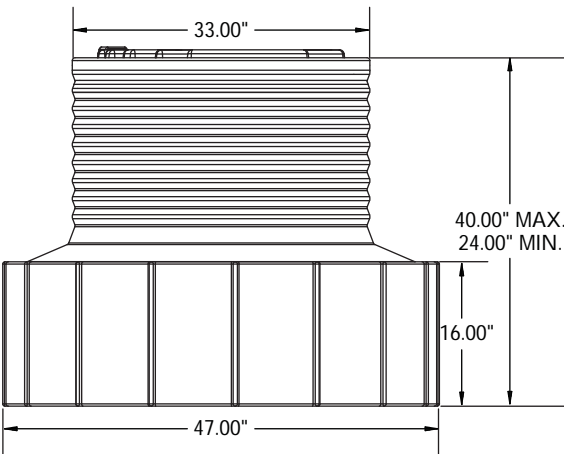
The 4736 Series is available in three burial depths. Each is offered with an optional inspection port (IP) for easy viewing of the interior of the sump without removal of the lid.



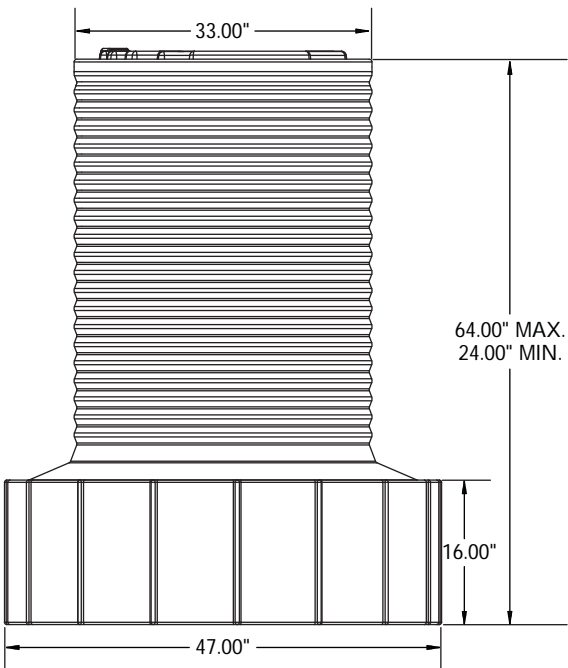
Model	Description
TSD-4736	Tank sump, deep burial, 47" base, fits 36" manway
TSD-4736-IP	TSD-4736 sump with inspection port factory installed
TSM-4736	Tank sump, medium burial, 47" base, fits 36" manway
TSM-4736-IP	TSM-4736 sump with inspection port factory installed
TSS-4736	Tank sump, shallow burial, 47" base, fits 36" manway
TSS-4736-IP	TSS-4736 sump with inspection port factory installed
260-036-08	TSM-4736 sump lid replacement
MA-22	Manway adapter, 22"
MA-24	Manway adapter, 24"
IP-400	Inspection port
IP-400-B	Inspection port, FEP style with well cap



TSS-4736
SHALLOW BURIAL



TSM-4736
MEDIUM BURIAL



TSD-4736
DEEP BURIAL

Advantages

- Constructed from rugged ¼" thick, three-layer hand layup FRP with a vapor, watertight gel coat interior wall surface.
- White gel coat interior provides a vapor and watertight barrier and superior visibility.
- Available in 42" and 48" diameter.
- Sump reducers are available to fit under a 42" or 36" manway.
- Double wall models are shipped under vacuum with a vacuum gauge installed for verification at site of sealed interstitial.
- Packages include watertight sump shield, sump reducer and sump riser.

Model Number Reference Chart

XXXXXX - X/X - XX - X
1 A B 2 3 4

1 = Sump Type

T = Turbine

A = Depth

M = Medium burial

D = Deep burial

B = Size

4236 = 42" diameter base, 36"

minimum manway diameter

4836 = 48" diameter base, 36"

minimum manway diameter

4842 = 48" diameter base, 42"

minimum manway diameter

2 = Watertight Shield Opening Options

0/0 = Turbine cover, no openings

3 = Base Options

OB = Octagonal base with bottom

RC = Round collar mount base

OC = Octagonal base mount base

4 = Interstitial Monitoring Method

S = Single wall, none

H = Hydrostatic (brine)

V = Vacuum

Watertight Fiberglass Turbine Sump Packages

Our octagonal base sumps are a two-piece design eliminating the need to work in a confined space during installation. Eight flat panels are molded into the bottom section to provide 90° pipe entries.

Available in both single and double wall configurations. Each package includes a patented watertight multi-port sump shield.

Most single wall models are available with or without bottom for various mounting options.

Double wall models are only available for mounting to tank collar.

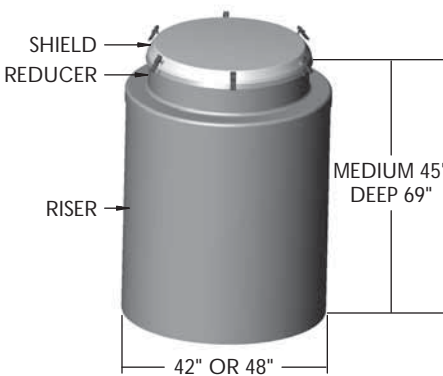
Note: Two-week lead time on all fiberglass parts.



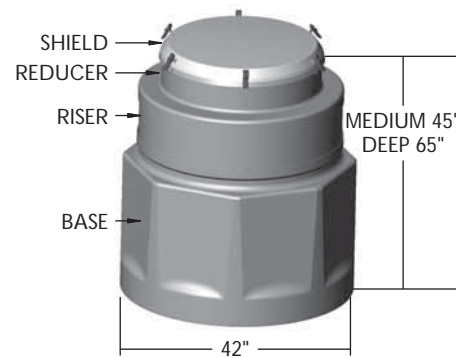
T Model
Turbine Sumps



T Model Two-Piece
Octagonal Turbine Sumps



TSM-4(x)36-0/0-RC-S



TSM-4836-0/0-OX-X

42" and 48" Single Wall Cylindrical Turbine Sumps

Model	Wall Type	Riser Base Dia.	Min. Manway Size	Seam Kits Recommended	Bottom
T(X)A4236-0/0-RC-S	Single	42	36	2	No
T(X)A4836-0/0-RC-S	Single	48	36	2	No

Note: Seam kits not included. See bottom of page for part number and pricing.

*Overall height.

42" Single and Double Wall Octagonal Turbine Sumps

Model	Wall Type	Octagonal Base Dia.	Min. Manway Size	Seam Kits Recommended	Bottom	Riser Dia.
T(X)4236-0/0-OC-S	Single	42	36	2	No	39
T(X)4236-0/0-OB-S	Single	42	36	1	Yes	39
T(X)4236-0/0-OC-H	Double	42	36	4	No	39
T(X)4236-0/0-OC-V	Double	42	36	4	No	39

Note: Seam kits not included. See bottom of page for part number and pricing.

*Overall height.

48" Single and Double Wall Octagonal Turbine Sumps

Model	Wall Type	Octagonal Base Dia.	Min. Manway Size	Seam Kits Recommended	Bottom	Riser Dia.
T(X)A4836-0/0-OC-S	Single	48	36	3	No	42
T(X)A4836-0/0-OB-S	Single	48	36	2	Yes	42
T(X)4836-0/0-OC-H	Double	48	36	4	No	42
T(X)4836-0/0-OC-V	Double	48	36	4	No	42

Note: Seam kits not included. See bottom of page for part number and pricing.

*Overall height.

30" and 36" Access Turbine Watertight Sump Shield Packages*

Model	Access Opening	Riser Dia.	Min. Manway Dia.	Seam Kits Recommended
TSS-4236	30"	42	36	1
TSS-4836	30"	48	36	1
TSS-XS36	30"	Xerxes 33	36	1

Note: Seam kits not included. See bottom of page for part number and pricing.

*Package includes watertight sump shield and riser reducer.



42" or 48" TSS models

Fiberglass Seam Adhesive Kit

Model	Description
FG-SEAMKIT	Includes matte, resin, putty and catalyst for one fiberglass seam single or double wall.

Note: Double wall applications may require two seam kits per seam.

Fiberglass Replacement Parts

Model	Description
TSS-36	36" watertight sump shield
602212001	33" sump shield gasket
602212002	40" sump shield gasket

Advantages

- 22" wide by 24", 36" or 48" long opening on base gives plenty of room for boot, fitting and monitor installation.
- Available in medium and deep burial depths to properly maintain slope.
- The base widens to a spacious 26" where entry boots and pipe connections are made.
- Height modifications are accomplished by trimming off the base at the ribs.
- Stabilizer bar kits (SBKs) mount into welded strut channels for shear valve mounting. One SBK is required for each shear valve and must be purchased separately.

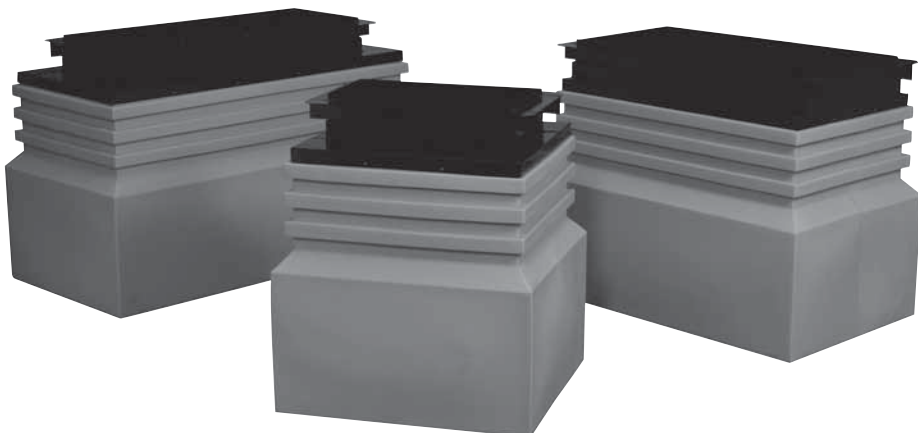


Large Mouth Dispenser Sumps

The large mouth dispenser sump modular design provides versatility and ease of installation.

There are six polyethylene bases in three lengths and two depths. These bases have a large 22" wide by 24", 36" or 48" long openings, easing the installation of entry boots and piping connections. The ribbed riser can be cut down in 3" increments in the field to achieve proper pipe slopes with respect to grade.

A variety of large mouth tops (LMTs) are available to match nearly every dispenser model. The lids are corrosion-resistant painted steel to which shear valves and dispenser frames are mounted.

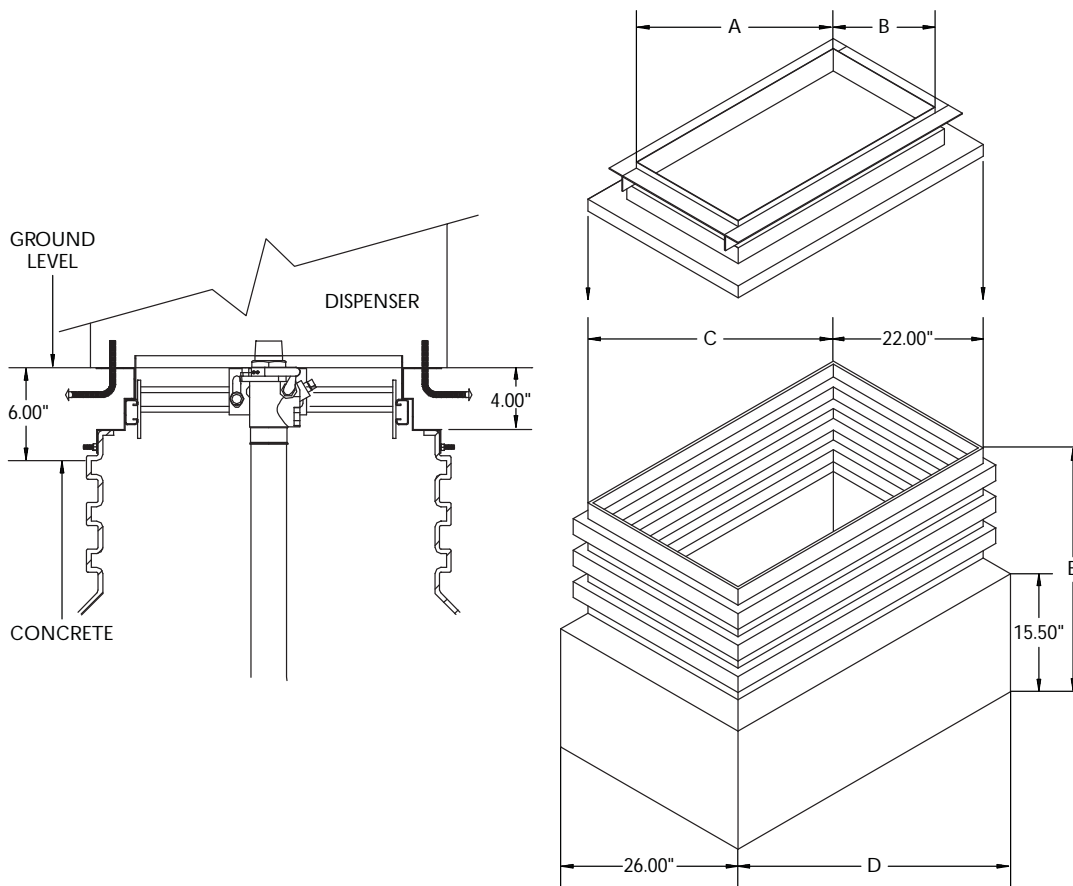


Model	SBK #
LM(M/D)-1410	SBK-2
LM(M/D)-1710	SBK-2
LM(M/D)-1913-T	SBK-25
LM(M/D)-2010	SBK-2
LM(M/D)-2018	SBK-3
LM(M/D)-2212*	SBK-25
LM(M/D)-2212-24	SBK-25
LM(M/D)-2313-T	SBK-25
LM(M/D)-2407	SBK-1
LM(M/D)-2409	SBK-2
LM(M/D)-2518*	SBK-3
LM(M/D)-2715	SBK-3
LM(M/D)-2811	SBK-25
LM(M/D)-2913*	SBK-25
LM(M/D)-2915	SBK-3
LM(M/D)-3109	SBK-2
LM(M/D)-3610	SBK-2
LM(M/D)-3617	SBK-3
LMM-3914-36	SBK-25
LM(M/D)-3914	SBK-25
LM(M/D)-4018	SBK-3
LM(M/D)-4109*	SBK-2
LM(M/D)-4111	SBK-25
LM(M/D)-4113*	SBK-25
LM(M/D)-4115	SBK-3

Notes: Medium and deep models include base and top. Stabilizer bar kits (SBK) sold separately.

For "M/D" in part number use "M" for medium or "D" for deep when ordering.

*Contact Customer Service for availability and lead times.

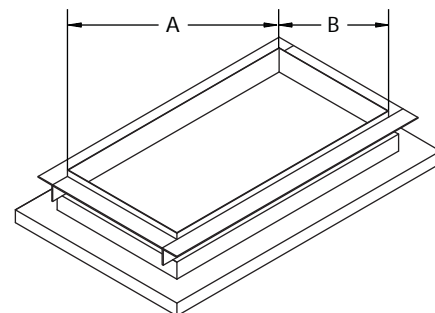


Model	A	B	C	D	E	
					Medium (M)	Deep (D)
LM(M/D)-1410	13.50"	9.75"	24.00"	28.00"	28.00"	43.00"
LM(M/D)-1710	17.00"	10.38"	24.00"	28.00"	28.00"	43.00"
LM(M/D)-1913-T	19.00"	12.00"	24.00"	28.00"	28.00"	43.00"
LM(M/D)-2010	20.50"	10.00"	24.00"	28.00"	28.00"	43.00"
LM(M/D)-2018	20.81"	18.31"	24.00"	28.00"	28.00"	43.00"
LM(M/D)-2212	22.50"	11.25"	36.00"	40.00"	28.00"	43.00"
LM(M/D)-2212-24	22.50"	11.25"	24.00"	28.00"	28.00"	43.00"
LM(M/D)-2313-T	23.00"	12.00"	36.00"	40.00"	28.00"	43.00"
LM(M/D)-2407	23.75"	7.50"	36.00"	40.00"	28.00"	43.00"
LM(M/D)-2409	23.75"	9.00"	36.00"	40.00"	28.00"	43.00"
LM(M/D)-2518	24.75"	17.75"	36.00"	40.00"	28.00"	43.00"
LM(M/D)-2715	27.00"	15.00"	36.00"	40.00"	28.00"	43.00"
LM(M/D)-2811	28.50"	11.00"	36.00"	40.00"	28.00"	43.00"
LM(M/D)-2913	29.75"	13.25"	36.00"	40.00"	28.00"	43.00"
LM(M/D)-2915	29.75"	15.75"	36.00"	40.00"	28.00"	43.00"
LM(M/D)-3109	31.00"	9.50"	36.00"	40.00"	28.00"	43.00"
LM(M/D)-3610	36.00"	10.25"	48.00"	52.00"	28.00"	43.00"
LM(M/D)-3617	36.00"	17.25"	36.00"	40.00"	28.00"	43.00"
LM(M/D)-3914-36	38.75"	14.00"	36.00"	40.00"	28.00"	43.00"
LM(M/D)-3914	38.75"	14.00"	48.00"	52.00"	28.00"	43.00"
LM(M/D)-4018	39.75"	17.75"	48.00"	52.00"	28.00"	43.00"
LM(M/D)-4109	41.50"	9.38"	48.00"	52.00"	28.00"	43.00"
LM(M/D)-4111	41.50"	11.00"	48.00"	52.00"	28.00"	43.00"
LM(M/D)-4113	41.50"	13.25"	48.00"	52.00"	28.00"	43.00"
LM(M/D)-4115	41.50"	15.75"	48.00"	52.00"	28.00"	43.00"

Note: For "M/D" in part number use "M" for medium or "D" for deep when ordering.

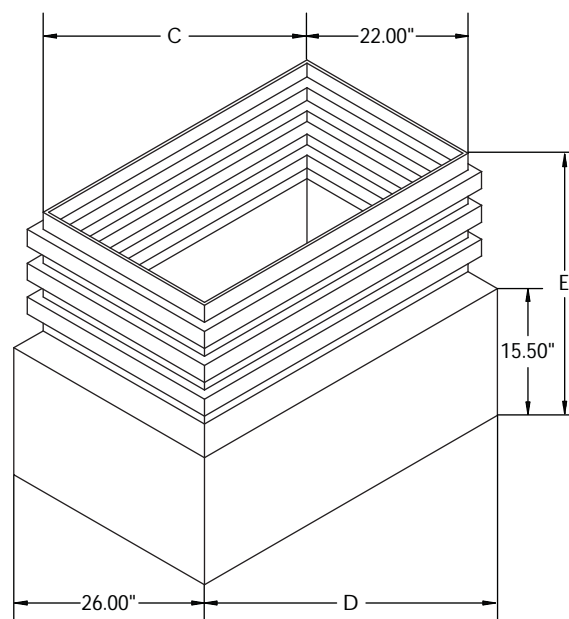
Large Mouth Dispenser Sump Tops

Model	A	B	Sump Base Size - LB(X)
LMT-1410	13.50"	9.75"	2400
LMT-1710	17.00"	10.38"	2400
LMT-1913-T	19.00"	12.00"	2400
LMT-2010	20.50"	10.00"	2400
LMT-2018	20.81"	18.31"	2400
LMT-2212	22.50"	11.25"	3600
LMT-2212-24	22.50"	11.25"	2400
LMT-2313-T	23.00"	12.00"	3600
LMT-2407	23.75"	7.50"	3600
LMT-2409	23.75"	9.00"	3600
LMT-2518	24.75"	17.75"	3600
LMT-2715	27.00"	15.00"	3600
LMT-2811	28.50"	11.00"	3600
LMT-2913	29.75"	13.25"	3600
LMT-2915	29.75"	15.75"	3600
LMT-3109	31.00"	9.50"	3600
LMT-3610	36.00"	10.25"	4800
LMT-3617-36	36.00"	17.25"	3600
LMT-3914-36	38.75"	14.00"	4800
LMT-3914	38.75"	14.00"	4800
LMT-4018	39.75"	17.75"	4800
LMT-4109	41.50"	9.38"	4800
LMT-4111	41.50"	11.00"	4800
LMT-4113	41.50"	13.25"	4800
LMT-4115	41.50"	15.75"	4800



Large Mouth Dispenser Sump Bases

Model	C	D	E
LBM-2400	24.00"	28.00"	28.00"
LBM-3600	36.00"	40.00"	28.00"
LBM-4800	48.00"	52.00"	28.00"
LBD-2400	24.00"	28.00"	43.00"
LBD-3600	36.00"	40.00"	43.00"
LBD-4800	48.00"	52.00"	43.00"



Large Mouth Dispenser Sumps Directory

The large mouth sump employs a 22" wide base opening with lengths of 24", 36" and 48". A removable powder coated steel cover comes in a variety of different configurations to match nearly all popular dispensers. Height modifications can be made in the field by trimming the base with standard tools.

Both styles of APT dispenser sumps have bases constructed of tough high-density polyethylene and brackets for mounting impact valve stabilizer bar kits. One SBK is required for each pipe that enters the dispenser. Refer to page 48 for ordering information.

Bennett

Series	Model	Polyethylene Sump	SBK #
Horizon/Big Squirt	2200 Series	LM(X)-2010	SBK-2
Horizon	2300 Series	LM(X)-2913	SBK-25
	2400 Series	LM(X)-4113	SBK-25
	3000 Series	LM(X)-1410	SBK-2
	6000 Series	LM(X)-1410	SBK-2
	9000 Series	LM(X)-4109	SBK-2
	9100 Series	LM(X)-4109	SBK-2
	3000 Series	LM(X)-2313-T	SBK-25

Gasboy

Series	Model	Polyethylene Sump	SBK #
	215A	LM(X)-1410	SBK-2
	216A	LM(X)-1410	SBK-2
	9140A	LM(X)-2313T	SBK-25
	9140AX	LM(X)-2313T	SBK-25
	9152A	LM(X)-1913T	SBK-25
	9152ATW1	LM(X)-2313T	SBK-25
	9152AX	LM(X)-1913T	SBK-25
	9152AXTW1	LM(X)-2313T	SBK-25
	9152AXTW2	LM(X)-2313T	SBK-25
	9153A	LM(X)-1913T	SBK-25
	9153AHC	LM(X)-1913T	SBK-25
	9153ATW1M	LM(X)-2313T	SBK-25
	9153ATW2	LM(X)-2313T	SBK-25
	9153AXTW2	LM(X)-2313T	SBK-25
	9850XTW2	LM(X)-2313T	SBK-25
	9852ATW2	LM(X)-2313T	SBK-25
	9852AXTW2	LM(X)-2313T	SBK-25
	9853ATW2	LM(X)-2313T	SBK-25
	9853AXTW2	LM(X)-2313T	SBK-25
	9153AX	LM(X)-1913T	SBK-25
	9153AXTW1	LM(X)-2313T	SBK-25
	9753EXIL	LM(X)-1913T	SBK-25
	9840A	LM(X)-2313T	SBK-25
	9840AX	LM(X)-2313T	SBK-25
	9850A	LM(X)-1913T	SBK-25
	9850AX	LM(X)-1913T	SBK-25
	9850AXTW1	LM(X)-2313T	SBK-25
	9852A	LM(X)-1913T	SBK-25
	9852ATW1	LM(X)-2313T	SBK-25
	9852AX	LM(X)-1913T	SBK-25
	9852AXTW1	LM(X)-2313T	SBK-25
	9853A	LM(X)-1913T	SBK-25
	9853AHC	LM(X)-1913T	SBK-25
	9853ATW1M	LM(X)-2313T	SBK-25

Gasboy (cont.)

Series	Model	Polyethylene Sump	SBK #
	9853AX	LM(X)-1913T	SBK-25
	9853AXTW1	LM(X)-2313T	SBK-25
	ATLAS	LM(X)-2313T	SBK-25

Gilbarco

Series	Model	Polyethylene Sump	SBK #
Advantage MPD		LM(X)-4115	SBK-3
Advantage Quad/Dual		LM(X)-2915	SBK-3
Advantage Single Hose	B71XXX	LM(X)-4115	SBK-3
Advantage Six Hose		LM(X)-4115	SBK-3
Advantage X+0 (36" frame)	B7AXXX	LM(X)-2915	SBK-3
Advantage X+0, X+1 (48" frame)	B7XXXX	LM(X)-4115	SBK-3
Commercial High Gallonage		LM(X)-2010	SBK-2
Commercial Ultra High Gallonage		LM(X)-2010	SBK-2
Eclipse	All	LM(X)-2212	SBK-25
Encore (40" sump length)	All	LM(X)-3617	SBK-3
Encore Super Hi	All	LM(X)-3617	SBK-3
Encore Ultra Hi	All	LM(X)-3617	SBK-3
Highhose MPD-X		LM(X)-3610	SBK-2
Highhose Salesmaker-2H	AM62XXA	LM(X)-2010	SBK-2
Highhose Salesmaker 4/4A		LM(X)-2313T	SBK-25
Highhose Salesmaker Pro	ABXXXXA	LM(X)-2313T	SBK-25
Highline 111B 21" frame	AC6921A	LM(X)-2010	SBK-2
Highline 111B 27" frame	AC3921A	LM(X)-2010	SBK-2
Highline High Gallonage	AC6942A	LM(X)-2010	SBK-2
Highline Ultra Hi Gallonage	AC6992A-MS1	LM(X)-2010	SBK-2
Highline Salesmaker 21" frame	AC1921A-S1	LM(X)-1410	SBK-2
Highline Salesmaker 27" frame	AC1921A-S1	LM(X)-1410	SBK-2
Highline Satellite	AC-4093-S1	LM(X)-2010	SBK-2
	AC-6093-S1	LM(X)-2010	SBK-2
Highline Super Hi	AC4982A-MS1	LM(X)-2010	SBK-2
	AC7982A-MS1	LM(X)-2010	SBK-2
Highline Ultra Hi	AC4992A-MS1	LM(X)-2010	SBK-2
	AC7992A-MS1	LM(X)-2010	SBK-2
Legacy	All	LM(X)-2407	SBK-1
Trimline 21" frame	252-0	LM(X)-2010	SBK-2
Trimline 27" frame	252-0	LM(X)-2010	SBK-2

RDR

Series	Model	Polyethylene Sump	SBK #
RDR		LM(X)-2018	SBK-3

Schlumberger

Series	Model	Polyethylene Sump	SBK #
Centurion Narrow	XXXXX1	LM(X)-2915	SBK-3
Centurion Wide	XXXXX2	LM(X)-4115	SBK-3
	435, 440, 640, 650	LM(X)-1913T	SBK-25
2300 Series		LM(X)-2811	SBK-25
2400 Series		LM(X)-4111	SBK-25
4100 Series		LM(X)-3109	SBK-2
4200 Series		LM(X)-3109	SBK-2
4300 Series		LM(X)-4109	SBK-2
4400 Series		LM(X)-4109	SBK-2
4600 Series		LM(X)-3109	SBK-2
4700 Series		LM(X)-3109	SBK-2
4800 Series		LM(X)-3109	SBK-2
4900 Series		LM(X)-3109	SBK-2

Tokheim

Series	Model	Polyethylene Sump	SBK #
	162	LM(X)-1913T	SBK-25
	220	LM(X)-1710	SBK-2
	222	LM(X)-1710	SBK-2
	262	LM(X)-1913T	SBK-25
	311	LM(X)-2518	SBK-3
	312	LM(X)-2518	SBK-3
	322	LM(X)-2518	SBK-3
	324	LM(X)-2518	SBK-3
	330	LM(X)-1710	SBK-2
	333	LM(X)-1710	SBK-2
	411	LM(X)-4018	SBK-3
	413	LM(X)-4018	SBK-3
	414	LM(X)-4018	SBK-3
	422	LM(X)-4018	SBK-3
	424	LM(X)-4018	SBK-3
	426	LM(X)-4018	SBK-3
	428	LM(X)-4018	SBK-3
	785	LM(X)-1913T	SBK-25
	793	LM(X)-1410	SBK-2
	1248	LM(X)-1913T	SBK-25
	1250	LM(X)-1913T	SBK-25
Centurion Narrow	XXXXX1	LM(X)-2915	SBK-3
Centurion Wide	XXXXX2	LM(X)-4115	SBK-3

Universal

Series	Model	Polyethylene Sump	SBK #
Univision	UV-9100	LM(X)-2811	SBK-25
	UV-9200	LM(X)-2811	SBK-25
	UV-9300	LM(X)-4111	SBK-25
	UV-9400	LM(X)-4111	SBK-25
3000 Narrow Base	All	LM(X)-1410	SBK-2
3000 Wide Base	All	LM(X)-1710	SBK-2
3500 Narrow Base	All	LM(X)-1410	SBK-2
3500 Wide Base	All	LM(X)-1710	SBK-2
4000 Narrow Base	All	LM(X)-1410	SBK-2
4000 Wide Base	All	LM(X)-1710	SBK-2
8000	All	LM(X)-3914	SBK-25

Wayne

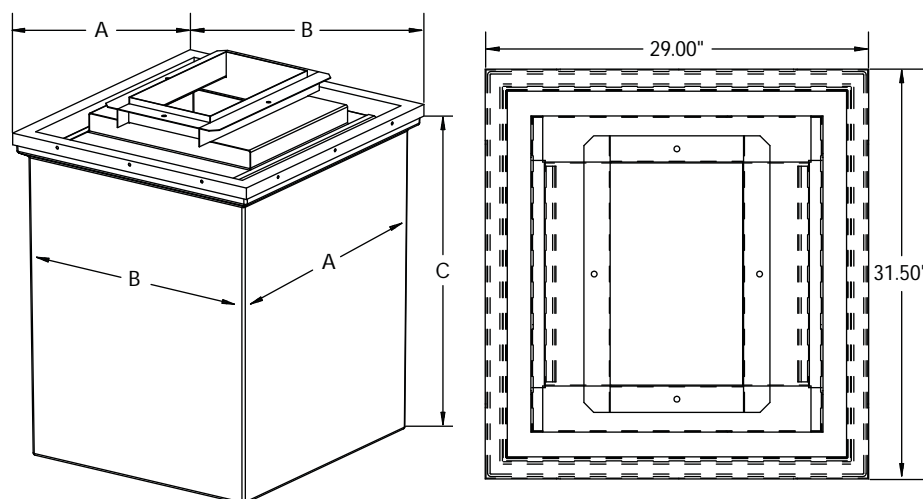
Series	Model	Polyethylene Sump	SBK #
	DS/375/19	LM(X)-2409	SBK-2
	DS/585/19E	LM(X)-2409	SBK-2
	DS/585/EG	LM(X)-2409	SBK-2
V289 Vista Series		LM(X)-2811	SBK-25
V387 Vista Series		LM(X)-2811	SBK-25
V388 Vista Series		LM(X)-2811	SBK-25
V389 Vista Series		LM(X)-2811	SBK-25
V390 Vista Series		LM(X)-4111	SBK-25
V395 Vista Series		LM(X)-4111	SBK-25
V399 Vista Series		LM(X)-4111	SBK-25
V490 Vista Series		LM(X)-4111	SBK-25
V580 Vista Series		LM(X)-2811	SBK-25
V585 Vista Series		LM(X)-2811	SBK-25
V590 Vista Series		LM(X)-4111	SBK-25
V595 Vista Series		LM(X)-4111	SBK-25
350 Series		LM(X)-2409	SBK-2
360 Series		LM(X)-2409	SBK-2
370 Series		LM(X)-2409	SBK-2
387 Series		LM(X)-2409	SBK-2
389 Series		LM(X)-2409	SBK-2
390 Series		LM(X)-4111	SBK-25
490 Series		LM(X)-4111	SBK-25
Global (GXXXX) Series		LM(X)-2715	SBK-3
Ovation Series	All	LM(X)-3914/LMM(3914-36)	SBK-25
Reliance		LM(X)-2715	SBK-3
HS3/V387		LM(X)-2715	SBK-3

Single and Double Wall Fiberglass Large Mouth Dispenser Sumps

Designed for the installer, single and double wall fiberglass large mouth dispenser sumps provide easy access to piping connections. The dispenser frame and top are factory assembled and field glassed onto the sump after piping connections are completed. Stabilizer bar kits (SBK) for mounting emergency shear valves are track mount designed and adjust in all planes for proper alignment of the shear valve to the dispenser piping.

Note: Consult customer service to verify lead time on all double wall dispenser sumps. Two-week lead time on all fiberglass parts.

2400 Series



Model	A	B	C	SBK #
LMM-1410-X	28.00"	26.00"	33.50"	SBK-2
LMM-1710-X	28.00"	26.00"	33.50"	SBK-2
LMM-1913-T-X	28.00"	26.00"	33.50"	SBK-25
LMM-2010-X	28.00"	26.00"	33.50"	SBK-2
LMM-2018-X	28.00"	26.00"	33.50"	SBK-3
LMM-2212-24-X	28.00"	26.00"	33.50"	SBK-25

Model	Description
HM-KIT	Hydrostatic monitoring system for dispenser sumps

Note: Fiberglass models include base and top.

Advantages

- Powder coated steel frame.
- Dispenser frame factory assembled and watertight sealed.
- Water dam frame design prevents surface water from entering sump.
- Strong three-layer hand layup FRP.
- Sumps include dispenser frames and mounting hardware.
- Stackable for reduced freight and storage space (single wall only).
- Double wall sumps are available for hydrostatic (brine) or vacuum monitoring and are shipped under vacuum with factory installed vacuum gauge.

Model Number Reference Chart

XXX - XXXX - XX
1 2A 2B 3

1 = Sump Type & Depth

LMM = Large mouth, medium bury

2 = Dispenser Frame Size

2A = A length

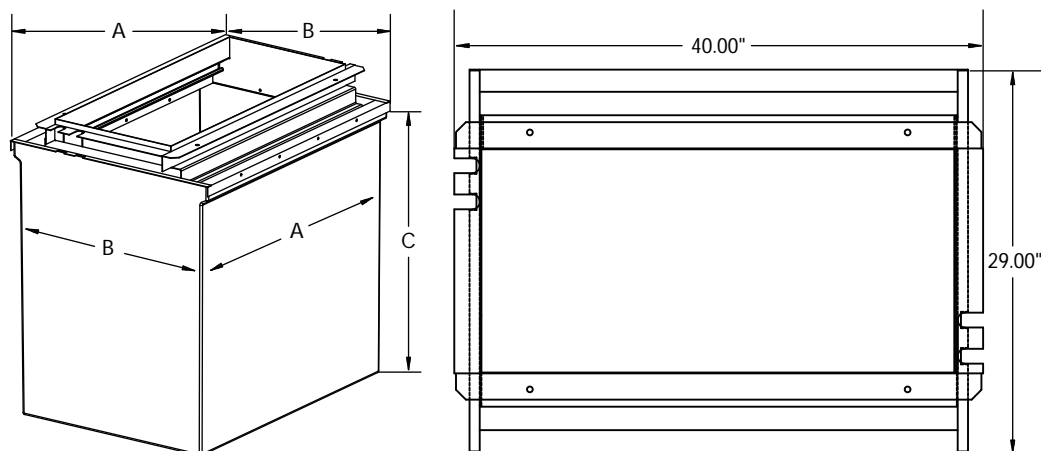
2B = B length

3 = Single or Double Wall

S = Single wall

D = Double wall

3600 Series

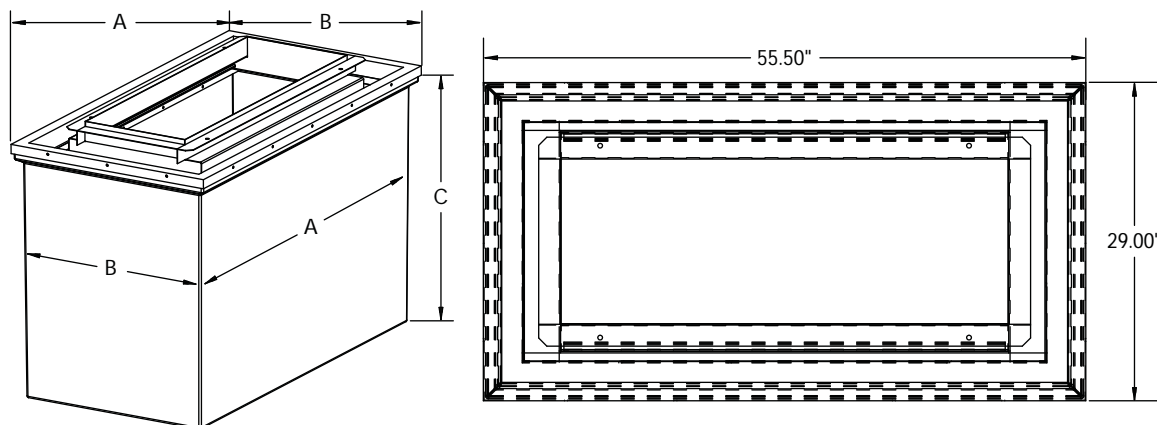


Model	A	B	C	SBK #
LMM-2212-X	36.00"	26.00"	33.50"	SBK-25
LMM-2313-T-X	36.00"	26.00"	33.50"	SBK-25
LMM-2407-X	36.00"	26.00"	33.50"	SBK-1
LMM-2409-X	36.00"	26.00"	33.50"	SBK-2
LMM-2518-X	36.00"	26.00"	33.50"	SBK-3
LMM-2715-X	36.00"	26.00"	33.50"	SBK-3
LMM-2811-X	36.00"	26.00"	33.50"	SBK-25
LMM-2913-X	36.00"	26.00"	33.50"	SBK-25
LMM-2915-X	36.00"	26.00"	33.50"	SBK-3
LMM-3109-X	36.00"	26.00"	33.50"	SBK-2
LMM-3617-X	36.00"	26.00"	33.50"	SBK-3
LMM-3914-36-S	36.00"	26.00"	33.50"	SBK-25

Model	Description
HM-KIT	Hydrostatic monitoring system for dispenser sumps

Note: Fiberglass models include base and top.

4800 Series



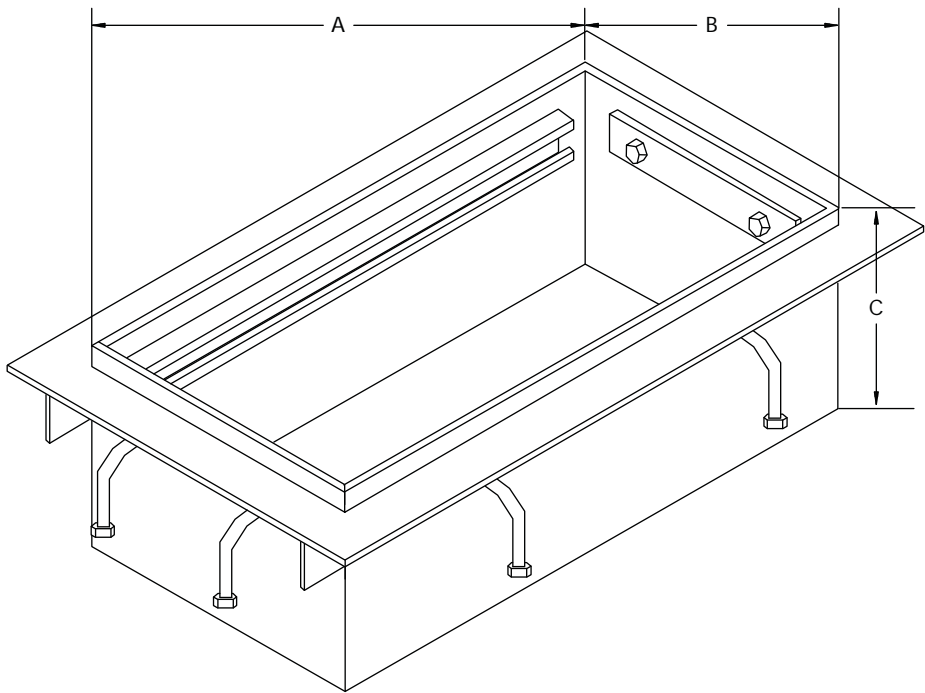
Model	A	B	C	SBK #
LMM-3610-X	52.00"	26.00"	33.50"	SBK-2
LMM-3914-X	52.00"	26.00"	33.50"	SBK-25
LMM-4018-X	52.00"	26.00"	33.50"	SBK-3
LMM-4109-X	52.00"	26.00"	33.50"	SBK-2
LMM-4111-X	52.00"	26.00"	33.50"	SBK-25
LMM-4113-X	52.00"	26.00"	33.50"	SBK-25
LMM-4115-X	52.00"	26.00"	33.50"	SBK-3

Model	Description
HM-KIT	Hydrostatic monitoring system for dispenser sumps

Note: Fiberglass models include base and top.

Classic Dispenser Pan Sumps

Dispenser pans are an extremely cost-effective alternative where shallow burial is permitted. Each model of dispenser pan is furnished with concrete anchor bolts and utilizes galvanized steel top frames for anchoring the dispenser.



Model	Description	A	B	C	SBK #
DP-1816	Dispenser pan, 13¾" × 11¼"	13.75"	11.25"	10.25"	SBK-2
DP-2014	Dispenser pan, 16½" × 10½"	16.50"	10.50"	8.75"	SBK-2
DP-2816	Dispenser pan, 23" × 11¾"	23.00"	11.75"	9.00"	SBK-2
DP-4721	Dispenser pan, 42" × 16"	42.00"	16.00"	8.75"	SBK-3

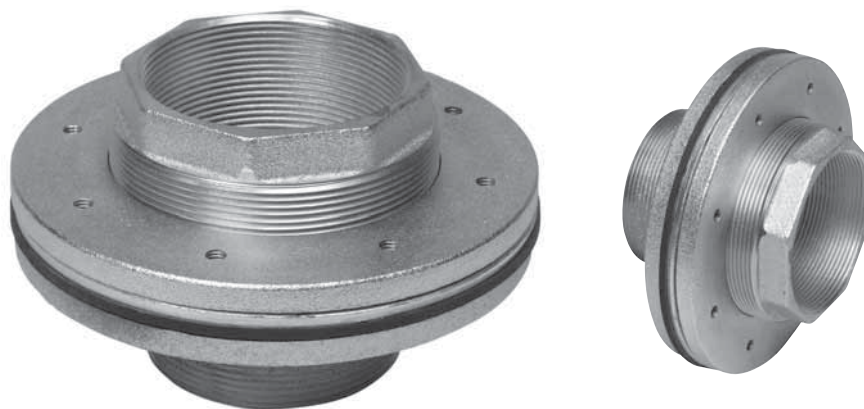
Advantages

- Easily installs with standard tools.
- TFA-400-II fits onto a standard 4" NPT tank riser pipe with 4" NPT internal threads for mounting a submersible pump.
- TFA-600 fits onto a standard 6" NPT tank riser pipe with 6" NPT internal threads for mounting a submersible pump.
- Installs through one hole in the sump base, permitting the sump to be rotated on the adapter to properly align pipe penetrations.
- Compression ring design allows installation with a solid gasket ring to ensure a watertight seal and environmental security.

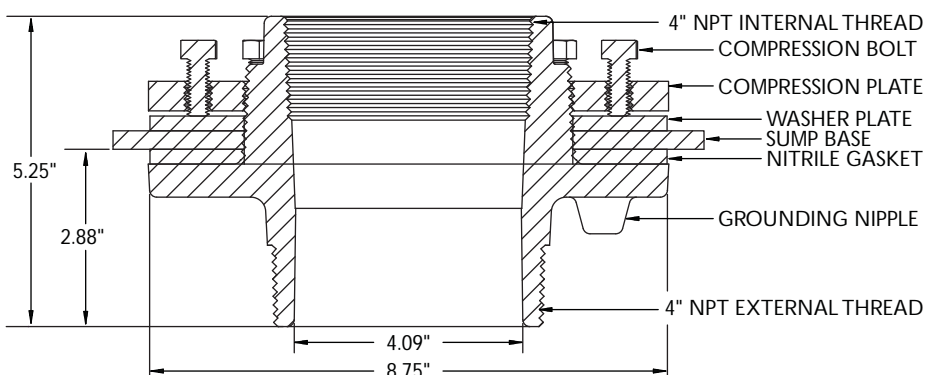
Tank Fitting Adapters

APT tank fitting adapters provide a high quality, cost-effective way to mount tank sumps to a standard 4" NPT tank opening or 6" NPT tank opening. The bright zinc plated cast iron construction is not only strong, but corrosion-resistant.

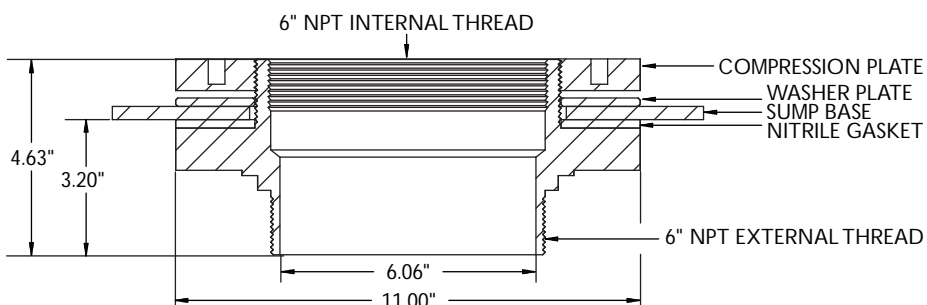
The TFA-400-II and TFA-600 are easy to install and their single hole style mounting allows sumps to be rotated to properly align pipe entries.



TFA-400-II Tank Fitting Adapter



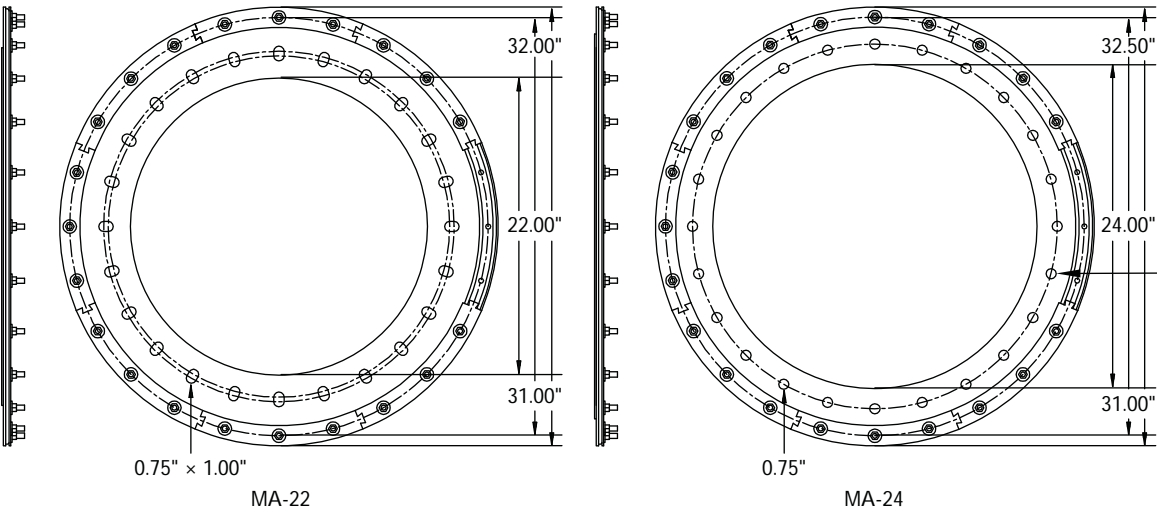
TFA-600 Tank Fitting Adapter



Model	Description
TFA-400-II	Tank fitting adapter generation II, 4" NPT
TFA-600	Tank fitting adapter, 6" NPT
411-105-02	Compression plate for TFA-400-II (replacement)
420-200-02	Plate washer TFA-400-II (replacement)
446-100-02	Gasket for TFA-400-II

Tank Manway Adapters

APT tank manway adapters permit tank sumps to be mounted directly to a tank's 22" or 24" manway.



Model	Description
MA-22	22" tank manway adapter
MA-24	24" tank manway adapter

Stabilizer Bar Kits

Model	Description
SBK-1	Stabilizer bar kit 1
SBK-2	Stabilizer bar kit 2
SBK-3	Stabilizer bar kit 3
SBK-25	Stabilizer bar kit 25

Advantages

- The bulkhead tightening tools speed the installation of bulkhead boots while providing a more even distribution of torque than standard spanner wrenches.
- The reusable steel drill template is a durable, faster alternative to the paper templates provided with each entry boot.
- The air test regulator provides a fast, accurate means of testing the secondary layer of APT pipe integrity prior to charging with product.
- The double wall cutter simplifies secondary jacket removal without causing damage to the primary pipe.
- All double wall cutters are plated blue along with the letters "XP" stamped on the body for easy identification.

Installation Tools



Deburring Tool, DBT-100



SLP-1000



Double Wall Cutting Tool

Part Number	Description
BPT-100	Bypass tube, 30" length
BOS-103	Bostik 1100, 10.3 ounce tube
BTT-004	Bulkhead tightening tool for 4 stud bulkhead boots
BTT-008	Bulkhead tightening tool for 8 stud bulkhead boots
DBT-100	Deburring tool
DWC-XP-100	Double wall cutting tool, 1"
DWC-XP-150	Double wall cutting tool, 1½"
DWC-XP-175	Double wall cutting tool, 1¾"
DWC-XP-200	Double wall cutting tool, 2"
DWC-XP-KIT	Double wall cutting tool handle replacement kit
SDT-004	Steel drill template for 4 stud entry boots
SDT-010	Steel drill template for 4, 8 and 10 stud entry boots
SLP-1000	Sump lid puller for TS-4542 and TS-4736 snap-on lid
TRK-100	Air test regulator for APT secondary contained piping

Swage Machine

Model	Description
SWK-150	Swage tool kit, 1½"
SWK-175	Swage tool kit, 1¾"
SWK-200	Swage tool kit, 2"

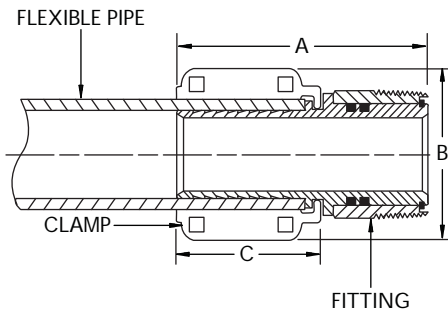
P-Series Clamshell Swivel Pipe Fittings

When using APT product piping, continuous runs eliminate the need for in-line joints. Installers make connections inside accessible containment sumps using APT swivel fittings. These fittings are manufactured from solid brass with two Viton O-rings protected in grooves located on the inside of the connector. Ductile iron clamps with zinc plating secure the fittings to the pipe.

Note: Use only P-Series fittings with P-Series piping.

Male Swivels

Model	A	B	C
MS-150-150	4.50"	3.13"	2.12"



Male Swivels*

Model	Description
MS-150-150	Male swivel installs on the end of 1½" single/secondary contained pipe with 1½" NPT
MS-175-200	Male swivel installs on the end of 1¾" single/secondary contained pipe with 2" NPT
MS-200-200	Male swivel installs on the end of 2" single/secondary contained pipe with 2" NPT

*Contact Customer Service for availability and lead times on all P-Series clamshell swivel pipe fittings.

Advantages

- No special tools required for fitting installation.
- Connection threads are compatible with 1½" or 2" standard NPT pipe threads.
- Swivel fittings utilize proven APT ductile iron pipe clamps.
- FFS provides all sealants, clamps, bolts and installation instructions with every fitting.
- Male and female swivel fittings available.



Advantages

- No special tools required for fitting installation.
- Connection threads are compatible with standard NPT pipe threads.
- Nipple fittings utilize APT proven ductile iron pipe clamps.
- The solid brass, one-piece design with NPT connectors offers fewer potential leak points.
- APT provides all sealants, clamps, bolts and installation instructions with every fitting.

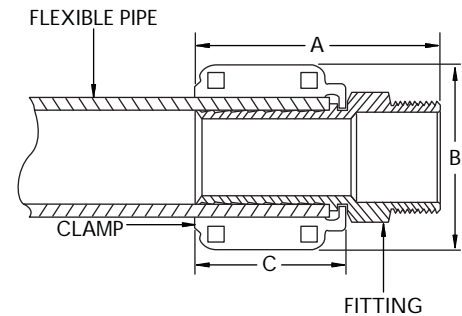


P-Series Clamshell Non-Swivel Pipe Fittings

APT non-swivel pipe fittings provide the same high quality and environmental security as APT swivel fittings, at a more economical price. APT nipple fittings are manufactured from one-piece solid brass and utilize the same ductile iron clamps as our swivel fittings.

Note: Use only P-Series fittings with P-Series piping.

Model	A	B	C
MN-075-075	2.49"	2.32"	1.40"
MN-100-100	2.98"	2.57"	1.40"



Model	Description
MN-075-075	Male nipple installs on the end of 3/4" single/secondary contained pipe with 3/4" NPT
MN-100-100	Male nipple installs on the end of 1" single/secondary contained pipe with 1" NPT
MN-250-300	Male nipple installs on the end of 2 1/2" single/secondary contained pipe with 3" NPT

Note: Contact Customer Service for availability and lead times on all P-Series clamshell non-swivel pipe fittings.



Distributed by:



FFS-0059 01-10



Franklin Fueling Systems

3760 Marsh Road • Madison, Wisconsin 53718, USA

Tel: +1 608 838 8786 • Fax: +1 608 838 6433

Tel: USA & Canada 1 800 225 9787

Tel: México 001 800 738 7610

www.franklinfueling.com